

SEA LEVEL CONSTRUCTION

Point	ESL	Net ESL	Min	Max			
1	40	35	30	200			15.2
2	5	-35	4	15	Cycle 36		8.2
3	40	49	30	200			5.3
4	-9	-9	-10	0	Cycle 35		-2.7
5	0	-5	0	0			0.6
6	5	14.5	4	15			1.6
7	-9.5	-9.5	-10	0	Cycle 34		3.1
8	0	-7.5	0	0			9
9	7.5	2.5	4	15			15
10	5	-7.5	4	15	Cycle 33		13.5
11	12.5	-7.5	10	10			15
12	20	-10	20	150			16.5
13	30	30	25	150			18.5
14	0	-12.5	0	0	Cycle 32		12.3
15	12.5	-7.5	10	10			13.3
16	20	-10	20	150			13.3
17	30	31	25	150			17.3
18	-1	-6	-10	0	Cycle 31		11
19	5	-7.5	4	15			11.2
20	12.5	-27.5	10	10			11.2
21	40	41.5	30	200			14.7
22	-1.5	-1.5	-10	0	Cycle 30		10.7
23	0	-5	0	0			13.5
24	5	-25	4	15			13.2
25	30	10	25	150			12.4
26	20	7.5	20	150			7.4
27	12.5	14	10	10			5.4
28	-1.5	-2.5	-10	0	Cycle 29		5.4
29	1	-4	0	0			6.7
30	5	-5	4	15			8.5
31	10	-2.5	10	10			10
32	12.5	7.5	10	10			16
33	5	-5	4	15	Cycle 28		14.5
34	10	-2.5	10	10			15
35	12.5	-27.5	10	10			17
36	40	35	30	200			17
37	5	-2.5	4	15	Cycle 27		10
38	7.5	-12.5	4	15			8
39	20	7.5	20	150			6.5
40	12.5	7.5	10	10			6.5
41	5	10	4	15			12
42	-5	-5	-10	0	Cycle 26		12
43	0	-20	0	0			12.1
44	20	-20	20	150			12.1
45	40	35	30	200			9.1
46	5	9.5	4	15			2.6

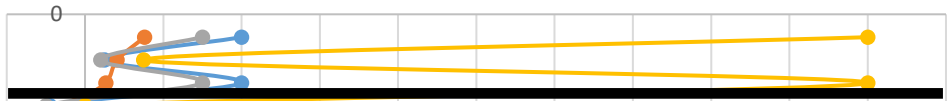
47	-4.5	-4.5	-10	0	Cycle 25	4.6
48	0	-5	0	0		6
49	5	-2.5	4	15		5.7
50	7.5	-7.5	4	15		4.7
51	15	12.5	10	150		11.2
52	2.5	4	0	0		14.2
53	-1.5	-1.5	-10	0	Cycle 24	13.3
54	0	-40	0	0		13.6
55	40	10	30	200		21.6
56	30	32	25	150		13.3
57	-2	-2	-10	0	Cycle 23	8.5
58	0	-40	0	0		8.7
59	40	41.5	30	200		8.7
60	-1.5	-7.5	-10	0	Cycle 22	8.7
61	6	7	4	15		8.7
62	-1	-1	-10	0	Cycle 21	7.5
63	0	-40	0	0		15.7
64	40	41.5	30	200		16.7
65	-1.5	-1.5	-10	0	Cycle 20	16.7
66	0	-40	0	0		18
67	40	35	30	200		26
68	5	-35	4	15	Cycle 19	19
69	40	35	30	200		23
70	5	-35	4	15		16
71	40	35	30	200		17
72	5	-20	4	15	Cycle 18	10
73	25	20	20	150		13
74	5	-5	4	15	Cycle 17B	8
75	10	5	10	10		8.5
76	5	-15	4	15	Cycle 16	6
77	20	20	20	150		5
78	0	-7.5	0	0	Cycle 15	2.5
79	7.5	10	4	15		2
80	-2.5	-2.5	-10	0	Cycle 14	0.5
81	0	-7.5	0	0		3.5
82	7.5	10	4	15		3.2
83	-2.5	-2.5	-10	0	Cycle 12	1.7
84	0	-12.5	0	0		4.2
85	12.5	14	10	10		3.1
86	-1.5	-1.5	-10	0	Cycle 11	0.6
87	0	-10	0	0		2.9
88	10	15.5	10	10		3.9
89	-5.5	-5.5	-10	0	Cycle 10	9.9
90	0	-10	0	0		12
91	10	5	10	10		20
92	5	-35	4	15	Cycle 9	19
93	40	35	30	200		19.5

94	5	-35	4	15	Cycle 8	10.8
95	40	35	30	200		10.8
96	5	-2.5	4	15	Cycle 7	6.8
97	7.5	11	4	15		5.7
98	-3.5	-8.5	-10	0	Cycle 6	4.2
99	5	-15	4	15		8.9
100	20	20.5	20	150		7.9
101	-0.5	-0.5	-10	0	Cycle 5B	9.9
102	0	-20	0	0		10
103	20	20	20	150		13
104	0	-30	0	0	Cycle 5	9.5
105	30	30	25	150		17.5
106	0	-15	0	0	Cycle 4	11.4
107	15	12.5	10	150		11.9
108	2.5	-37.5	0	0	Cycle 3	11.9
109	40	40.5	30	200		11.3
110	-0.5	-3	-10	0	Cycle 2B	4.3
111	2.5	-12.5	0	0		6.4
112	15	15.5	10	150		5.5
113	-0.5	-5.5	-10	0	Cycle 2	2.5
114	5	-5	4	15		10.6
115	10	12	10	10		12.6
116	-2	-2	-10	0	Cycle 1	13.1
117	0	-40	0	0		16.5
118	40	25	30	200		19
119	15	2.5	10	150		14
120	12.5	-2.5	10	10		12
121	15	2.5	10	150		12.5
122	12.5	-2.5	10	10		12
123	15	10	10	150		9.4
124	5	-10	4	15		7.4
125	15	2.5	10	150		7.9
126	12.5	13	10	10		7.9
127	-0.5	-5.5	-10	0		6.4
128	5	-2.5	4	15		8
129	7.5	-7.5	4	15		10
130	15	10	10	150		8.4
131	5	-2.5	4	15		6.4
132	7.5	-7.5	4	15		8.4
133	15	15.5	10	150		6.8
134	-0.5	-5.5	-10	0		4.8
135	5	-10	4	15		6.4
136	15	15.5	10	150		6.4
137	-0.5	-5.5	-10	0		4.9
138	5	-2.5	4	15		6
139	7.5	2.5	4	15		6.5
140	5	-2.5	4	15		6

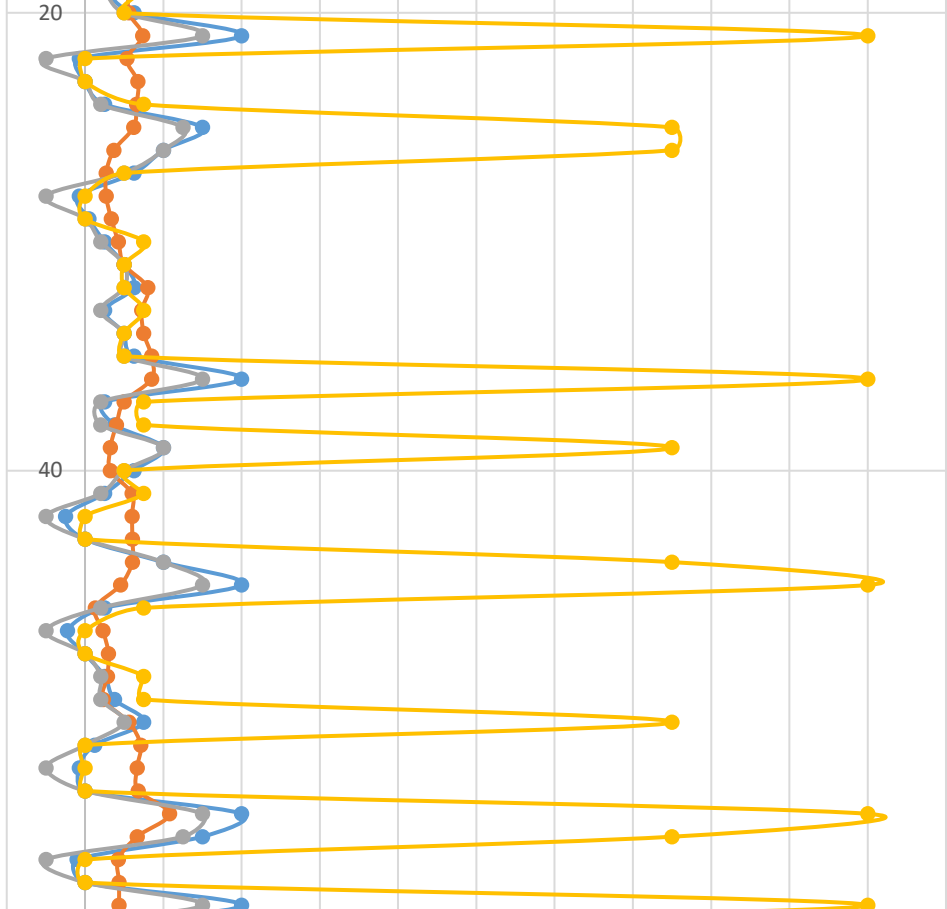
141	7.5	2.5	4	15			6.5
142	5	-2.5	4	15			6
143	7.5	2.5	4	15			4.9
144	5	-2.5	4	15			4.4
145	7.5	2.5	4	15			4.9
146	5	5.5	4	15			4.4
147	-0.5	-5.5	-10	0			5.9
148	5	-2.5	4	15			4.3
149	7.5	2.5	4	15			4.3
150	5	-7.5	4	15			4.3
151	12.5	21	10	10			5.8
152	-8.5	-13.5	-10	0			1.5
153	5	-2.5	4	15			3.9
154	7.5	-5	4	15			5.9
155	12.5	21.5	10	10			4
156	-9	-12.5	-10	0			1.5
157	3.5	-11.5	0	0			4.8
158	15	17	10	150			3
159	-2	-2	-10	0			0
160	0	-7.5	0	0			2.9
161	7.5	13	4	15			2.4
162	-5.5	-5.5	-10	0			1.9
163	0	-12.5	0	0			5.5
164	12.5	15	10	10			13.5
165	-2.5	-7.5	-10	0			13
166	5	-7.5	4	15			12.6
167	12.5	-27.5	10	10			12.6
168	40	30	30	200			12.6
169	10	14.5	10	10			12.6
170	-4.5	-9.5	-10	0			13.1
171	5	-7.5	4	15			16
172	12.5	-27.5	10	10			18
173	40	27.5	30	200			17.5
174	12.5	2.5	10	10			12
175	10	-5	10	10			11
176	15	5	10	150			11
177	10	-2.5	10	10			9.5
178	12.5	5	10	10			15.5
179	7.5	-2.5	4	15			14
180	10	2.5	10	10			14.5
181	7.5	-32.5	4	15			14
182	40	35	30	200			14.5
183	5	-5	4	15			8
184	10	2.5	10	10			9.5
185	7.5	-2.5	4	15			9
186	10	2.5	10	10			
187	7.5	-5	4	15			

188	12.5	5	10	10				
189	7.5	7.5	4	15				

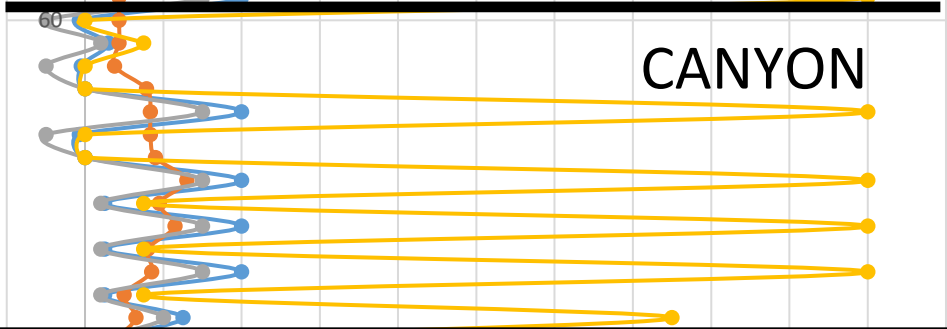
-20 0 20 40 60 80 100 120 140 160 180 200 220

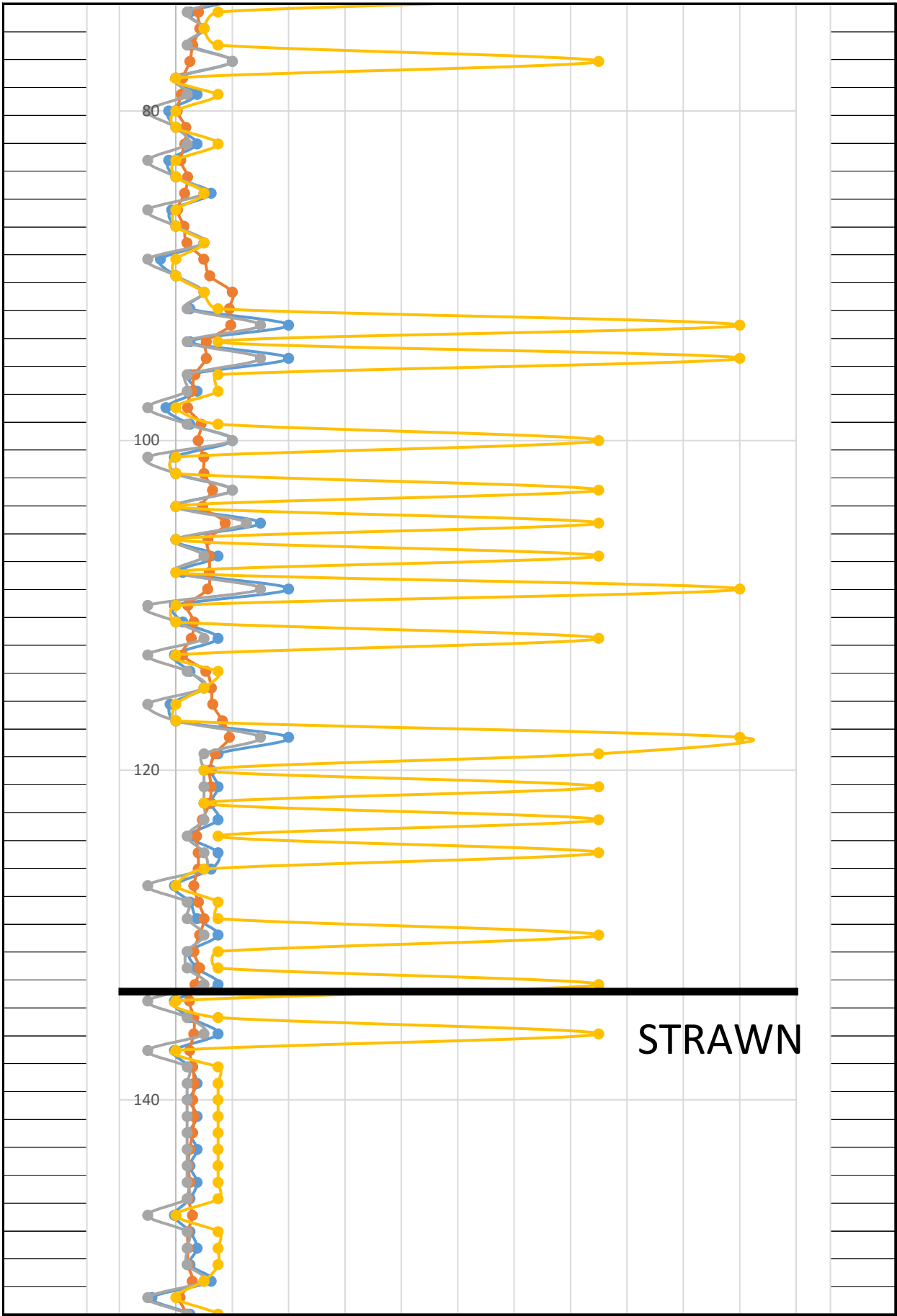


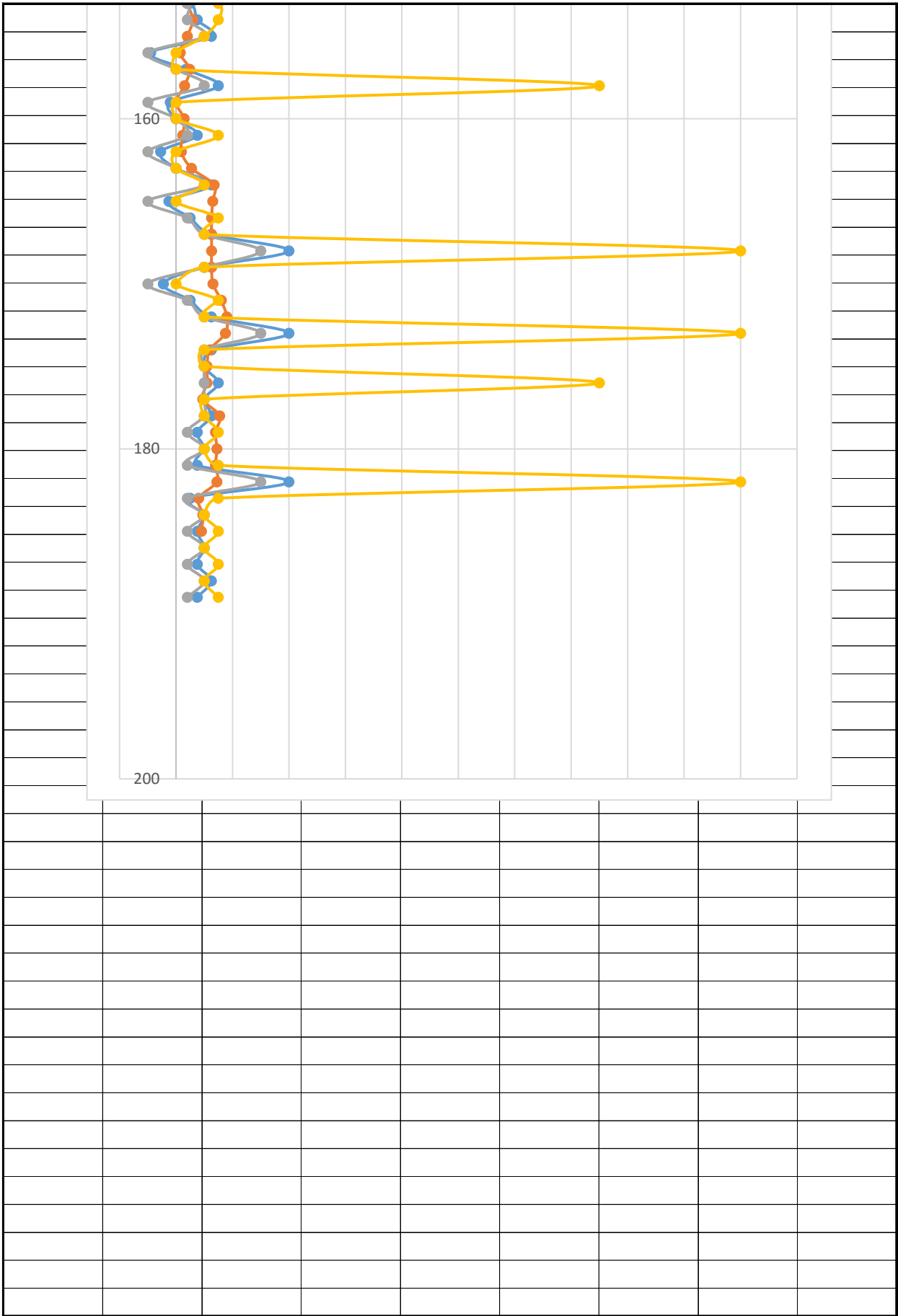
CISCO



CANYON







Sea Level Curve

