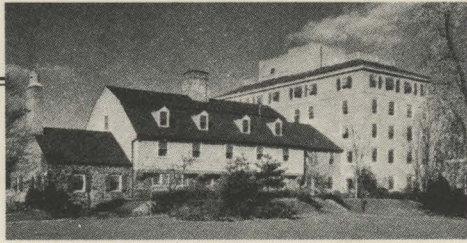


NASSAU TAVERN HOTEL



PALMER SQUARE

PRINCETON, N. J.

Fely 14<sup>th</sup> 1957.

Dear Emmett:

Many thanks for your card. I have looked up the reference. It is a raffito (schoolboy's scribble?) on a piece of slate from Mallia and dated to M.M.I. I will squeeze in a reference to it, but it does not come into our class of sketches.

Have you seen Hetty Goldman's Festschrift? On page 87 Virginia Grace in her paper The Canaanite Jar mentions ours with the  $\Delta$  sign. In listing that jar of ours could you please say it was found by Mrs. R. Stillwell in excavating the 3<sup>rd</sup> Tower in the Citadel House?

I am still waiting for Oxford to get everything back to Philadelphia. This delay is simply maddening.

All the best  
Yours Alan Wace