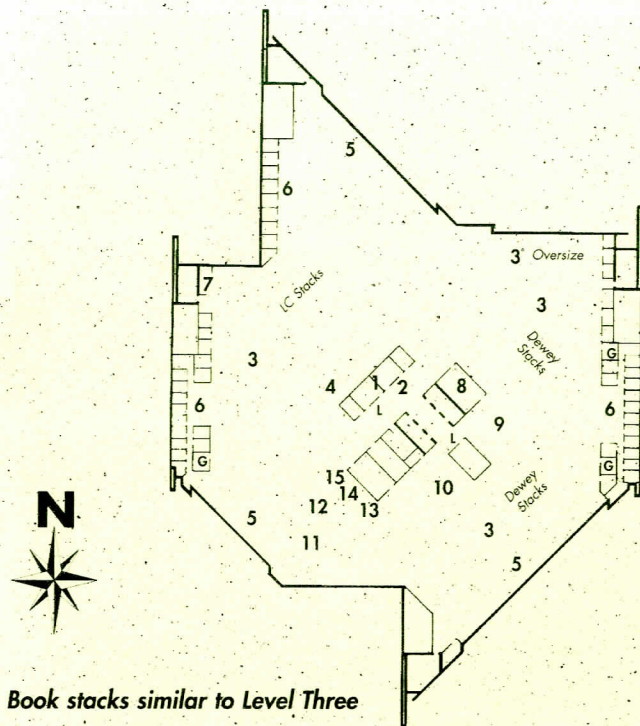


LEVELS FOUR AND FIVE



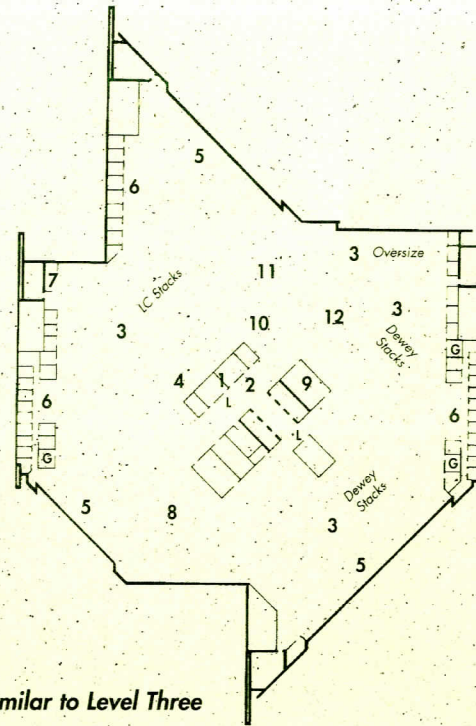
Book stacks similar to Level Three

(1) Subject bibliographers, available for consultation by appointment. (2) A small self-service collection of reference sources, plus several UTCAT terminals. (3) Open stacks: see the Location Charts (L) near the elevators for range locations. (4) Distribution shelves: sorting area for materials to be reshelfed. (5) Carrels, tables, and lounge furniture are concentrated near the three window areas on this level. Graduate student lockers are adjacent to the carrels. (6) Closed studies reserved for doctoral candidates and faculty. Three Group Studies (G) are available for two or more persons on a first-come basis. (7) Stack Floor Supervisor's Office. (8) Electronic Classroom (4.102).

Special Collections: (9) Textbook and Curriculum Collection (5F). (10) U.S. Congressional Publications (5H). (11) U. S. Serial Set (5J and 5K). (12) United Nations mimeos (4K). (13) East Asian Library Catalog (Level Four). (14) Middle Eastern Library Catalog (Level Five). (15) South Asian Library Catalog (Level Five).

Take the elevator or stairs to Level Six...

LEVEL SIX



Book stacks similar to Level Three

Level Six of the Perry-Castañeda Library is similar in arrangement to the other book stack levels except that materials from the Library and Information Science Collection are housed in a special area on this level.

(1) Bibliographers' Offices. The librarian/bibliographer for Library and Information Science is located in area 9. (2) A small self-service collection of reference sources, plus several UTCAT terminals. (3) Open stacks: see the Location Charts (L) near the elevators for range locations. (4) Distribution shelves: sorting area for materials to be reshelfed. (5) Carrels, tables, and lounge furniture near the three window areas. Graduate student lockers adjacent to the carrels. (6) Closed studies reserved for doctoral candidates and faculty. Three Group Studies (G) are available for two or more persons on a first-come basis. (7) Stack Floor Supervisor's Office. (8) Enclosed stack for special materials. Request materials at PCL Circulation Desk. (9) Library and Information Science Collection Office. (10) Library and Information Science Reference Collection. (11) Current Library and Information Science Collection periodicals. (12) Youth Collection: books for children and young adults.

Please stop by the Information Desk or the Reference and Information Desk on the entrance level. Staff are eager to answer your questions.

THANK YOU!

PERRY-CASTAÑEDA LIBRARY

SELF-GUIDED TOUR



This self-guided tour will introduce you to the facilities and services of the Perry-Castañeda Library.

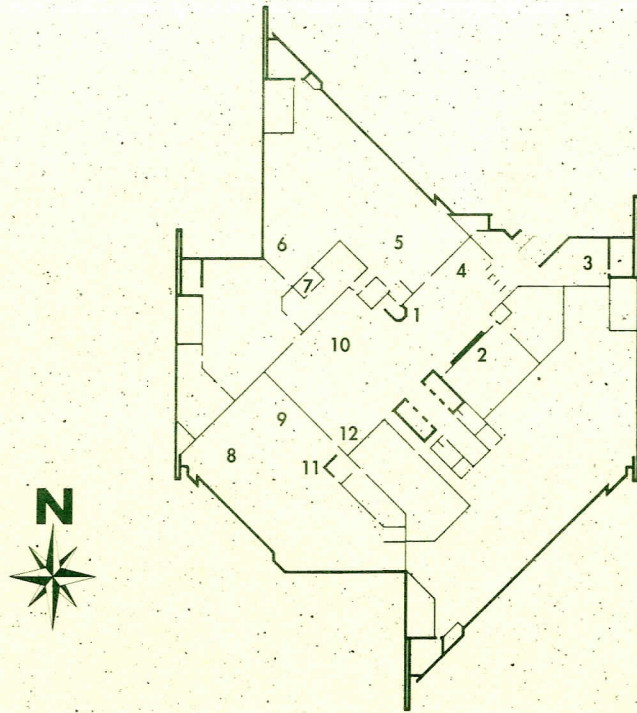
The Perry-Castañeda Library entrance is on Level Two.

Begin your tour at the Information Desk on this level.

THE GENERAL LIBRARIES

The University of Texas at Austin

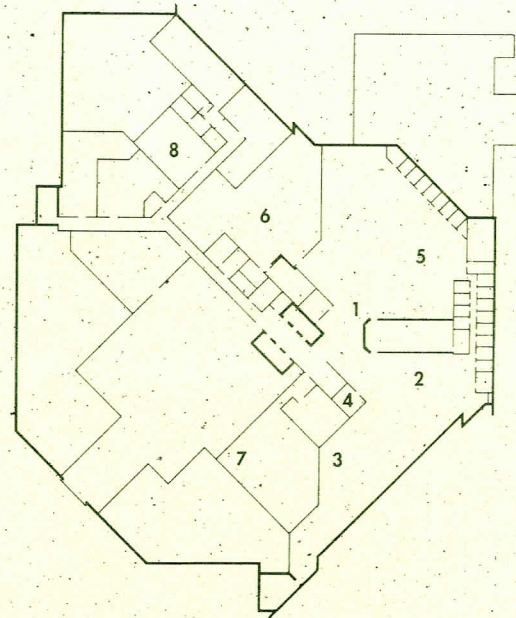
LEVEL TWO (ENTRANCE)



(1) Information and handouts about the General Libraries, plus assistance in using the Online Catalog, the Main Card Catalog, and the bibliographies shelved in adjacent area. (2) Check out materials at the Circulation Desk with a valid (current) UT ID. Recalls for in-use materials, searches for unlocated materials, library fine and fee inquiries, requests for Courtesy Borrower cards, graduate student lockers and closed studies, and lost and found also handled here. (3) Public lockers and telephones. (4) Selected new books and lounge area. (5) Reference and Information Services provides answers to questions about printed and electronic library resources. Contains the most comprehensive reference collection in the General Libraries. (6) Electronic Information Center. (7) Inter-Library Service (ILS): University faculty, staff, and students can request library materials not owned by the UT Austin Libraries. (8) Documents collection of more than 200,000 items issued by the United States government. Reference Desk staff provide assistance in using these materials. (9) Materials pertaining to federal and state taxation: loose-leaf services and sets of rules, regulations, and decisions. (10) Catalog Area: UTCAT, the Online Catalog lists over five million volumes in the UT Austin libraries. The Main Card Catalog lists pre-1986-acquired items in campus libraries. (11) Reserves: materials placed on short-term loan at faculty request. (12) Exhibits.

Take the elevator or stairs down to Level One...

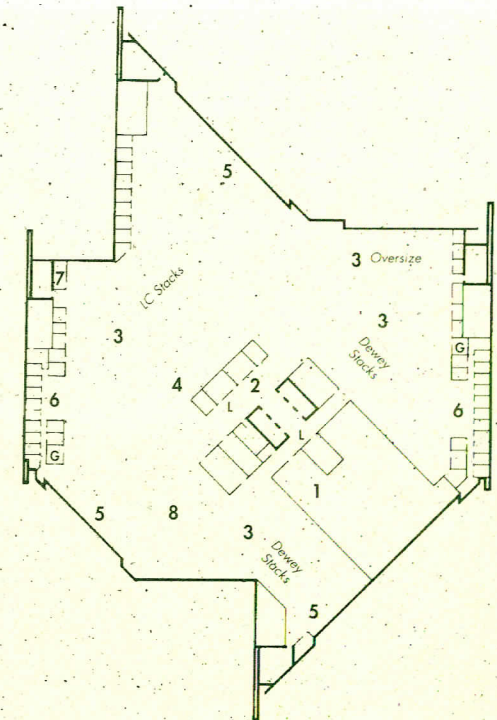
LEVEL ONE



(1) Periodicals and Microforms includes current periodicals and the PCL microforms collection. Assistance in locating these materials is available at the service desk. (2) Current issues of periodicals are arranged alphabetically by main entry (usually title). Bound volumes of issues are shelved by call number on stack levels three through six. (3) Current issues of most newspapers are on the open shelves; back issues must be requested at the service desk. Refer to the Newspaper List at the service desk to determine what titles are received and their locations. (4) Copiers for hard copy (paper) materials and for microforms. (5) A diverse collection of microforms (microfilm, microfiche, etc.) and microform readers. (6) Map Room: Over 200,000 topographic, political and thematic maps for all areas of the world, as well as maps of foreign and U.S. cities, nautical charts, general and specialized maps, recreation and tourist maps. (7) Photoduplication Center (1.102B): Pick up copying orders, purchase copy cards for PCL copiers, or send a fax. (8) Meeting Room: Public service and other special information sessions offered by the General Libraries held here.

Take the elevator or stairs to Level Three...

LEVEL THREE



Level Three is one of four stack levels. It is similar in arrangement to the other book stack levels except that the General Libraries Administrative Offices are located here.

(1) General Libraries Administrative Office: offices of director, associate and assistant directors, and the Library Personnel Office. (2) A small self-service collection of reference sources, plus several UTCAT terminals. (3) Open stacks: the collection is divided into three sections: materials by the Library of Congress (LC) Classification, materials by the Dewey Decimal Classification, and oversized books and bound periodicals in both classifications. See the Location Charts (L) near the elevators for range locations. (4) Distribution shelves: sorting area for materials to be re-shelved. (5) Carrels, tables, and lounge furniture are concentrated near the three window areas on this level. Graduate student lockers are adjacent to the carrels. (6) Closed studies reserved for doctoral candidates and faculty. Two Group Studies (G) are available for two or more persons on a first-come basis. (7) Stack Floor Supervisor's Office. (8) Circulating copies of UT Austin theses, dissertations, and professional reports.

Take the elevator or stairs to Level Four or Five...