



Hogg Foundation News

Volume 13, No. 1

The University of Texas, Austin 78712

Fall 1978

Sutherland Seminar Studies Mental Health Report

Rosalynn Carter Keynotes

First Lady Rosalynn Carter described her own involvement in mental health, "My interest . . . goes back to the time when Jimmy was Governor of Georgia, and I served on a commission he appointed to recommend ways to improve mental health care in our state. I learned then how effective lay citizens, volunteers, and professionals can be when motivated to address a pressing social problem that affects the community at large."

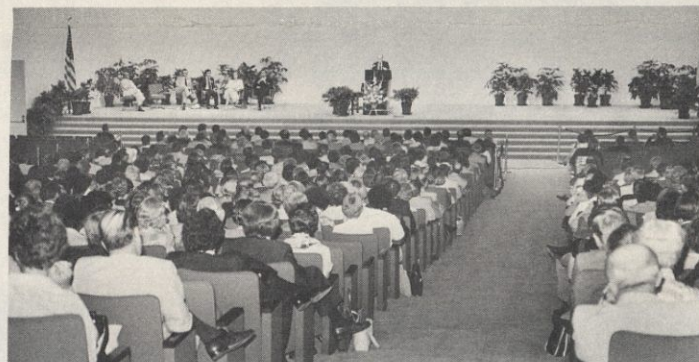
Mrs. Carter was speaking to more than 1,000 delegates and special guests attending the first Robert Lee Sutherland Seminar in Mental Health. The subject of this assembly, the initial conference in a memorial series dedicated to the late president of the Hogg Foundation, was a review of the *Report to the President* by the President's Commission on Mental Health.

Rosalynn Carter had served as honorary chair of the Commission, which conducted a yearlong study to appraise the quality of mental health care and identify unmet needs across the country.

The President's Commission was appointed in the spring of 1977 with 20 members named from across the United States. Commissioners represented all levels of interest—volunteer and professional—in mental health. The Commission and Task Force



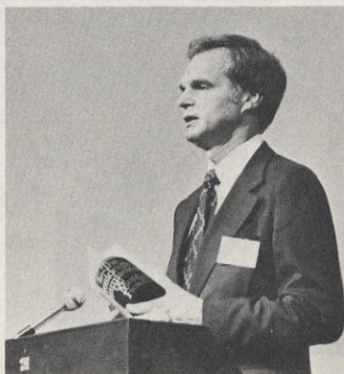
Rosalynn Carter, Lady Bird Johnson, Wayne Holtzman at LBJ Presidential Library. Photo by Jeanne Somers



Delegates hear reports from Commissioners. Photo by Jeanne Somers



Martha L. Mitchell, Assistant Director and Director of Nursing, Connecticut Mental Health Center. Member, President's Commission on Mental Health. Photo by Jeanne Somers



Thomas E. Bryant, Executive Director of the Public Committee for Mental Health. Chairman, President's Commission on Mental Health. Photo by Jeanne Somers



Julius B. Richmond, U. S. Surgeon General. Ex-Officio Member, President's Commission on Mental Health. Photo by Jeanne Somers



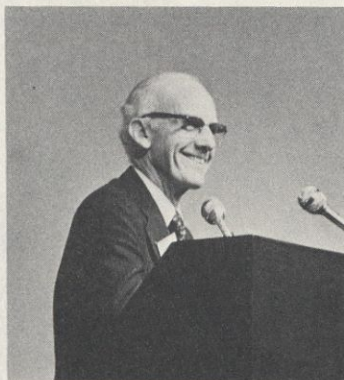
Allan Beigel, Director, Southern Arizona Mental Health Center. Member, President's Commission on Mental Health. Photo by Jeanne Somers



Reymundo Rodriguez, Executive Associate, Hogg Foundation. Member, President's Commission on Mental Health. Photo by Jeanne Somers



Shervert Frazier, Professor of Psychiatry, Harvard University. Commissioner, Texas Department of Mental Health and Mental Retardation 1965-1967. Photo by Jeanne Somers



Ward R. Burke, Vice President, Temple Industries. President, Texas Council of Community Mental Health and Mental Retardation Centers. Photo by Jeanne Somers



William P. Hobby, Lt. Governor, State of Texas. Chair, Public Education Task Force, Texas Plan for Mental Health Services 1962-1964. Photo by Lore Feldman: *The Emissary*



Helen Farabee, Member, Advisory Committee to Texas MHMR Board. Board, Mental Health Association and the Mental Health Association in Texas. Photo by Jeanne Somers

panels held public hearings, contemplating testimony and concerns of citizens. Opinions were solicited from advocates for those who use mental health services and from lay groups, associations, and lawmakers. Findings of the 12-month investigation culminated in publication of the Commission's *Report to the President* in April 1978.

The *Report's* implications for mental health care and its possible influence on provisions within Texas offered timely considerations for the first seminar of the Hogg Foundation-Sutherland series. Meeting in Austin at the Lyndon Baines Johnson Auditorium May 26 and 27, 1978, the seminar provided a forum for exploring and interpreting the Commission's findings.

Members of the President's Commission presented highlights of the *Report* and recommendations evolving from the study. Leaders of citizen interests within Texas addressed needs and goals in the state. A review of the community mental health movement in Texas was the topic for a former Commissioner of the Texas Department of Mental Health and Mental Retardation.

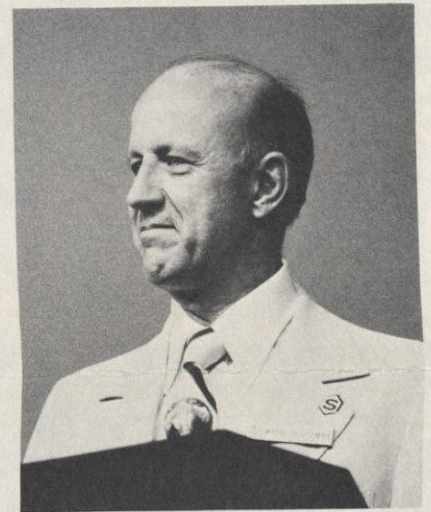
The keynote session heard Mrs. Lyndon Baines Johnson and the address by Mrs. Carter. Workshops offered closer examination of these subjects: "Comprehensive Services for the Community," "The Developing Child," "Youth Dilemmas," "Adulthood and Aging," "Integrating Support Systems for Prevention, Rehabilitation, and Care Giving—



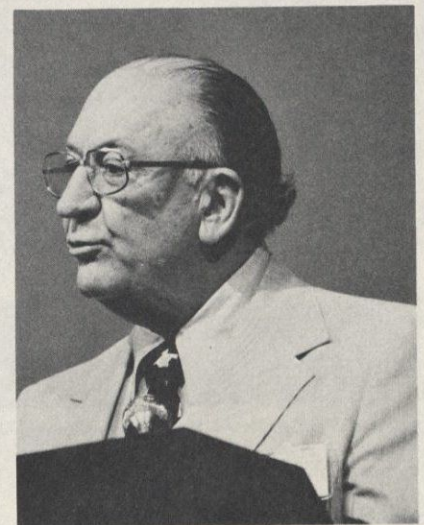
Photo by Joan Penzenstadler



Rosalynn Carter, Lady Bird Johnson, Wayne Holtzman outside LBJ Presidential Library. *Photo by Frank Wolfe: The LBJ Library*



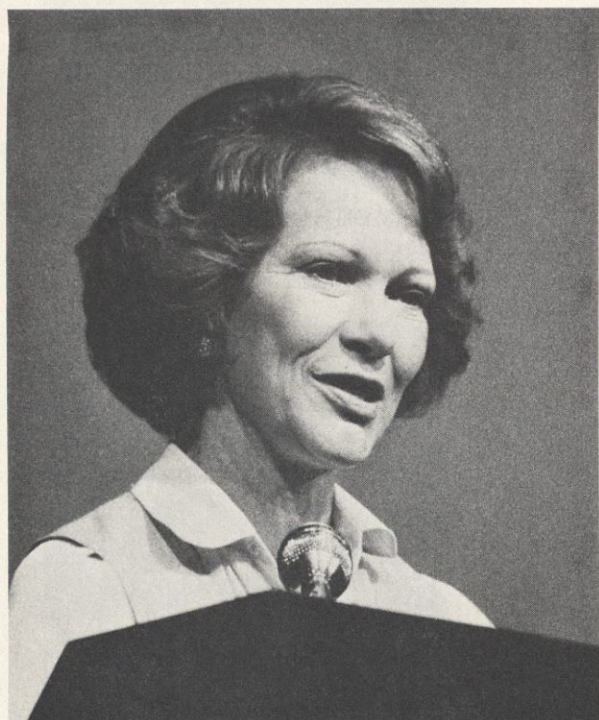
Wayne H. Holtzman, President, Hogg Foundation for Mental Health. *Photo by Frank Wolfe: The LBJ Library*



Edward Clark, Member, The University of Texas Board of Regents. *Photo by Frank Wolfe: The LBJ Library*



Mrs. Lyndon Baines Johnson. Photo by Frank Wolfe: The LBJ Library



Mrs. Rosalynn Carter. Photo by Frank Wolfe: The LBJ Library

Community and Regional Institutions,” and “Research, Training, and Evaluation.”

Each workshop group was asked to give consideration within its specific range to these issues: (1) access and barriers to mental health care, (2) individual rights and societal needs, (3) basic costs and financing, (4) respective responsibilities of national, state, and local agencies and (5) legislation of special concern.

At the closing plenary session, reports were presented from workshops. Participants were enthusiastic to organize for follow-up activity to improve service delivery and legal provisions in Texas. Citizens for Human Development, a movement which has grown out of the concern of seminar participants, continues efforts to effect change in Texas.

Proceedings of the Sutherland Seminar are available in a new book titled *Mental Health for the People of Texas*. Priced at \$4.00 and available from the Hogg Foundation Publications Division, the 237-page book contains seminar papers and presentations as well as summaries of the workshops.



Photo by Jeanne Somers

Some Workshop Groups



Photo by Mary Ellen Nudd



Photo by Jeanne Somers



Photo by Jeanne Somers



Photo by Jeanne Somers



Mrs. Carter at reception. Photo by Frank Wolfe: The LBJ Library



First Lady Rosalynn Carter, Mrs. Robert L. Sutherland. Photo by Jeanne Somers

Reception Scenes



Photo by Jeanne Somers



Photo by Jeanne Somers



Photo by Frank Wolfe: The LBJ Library

In This Mailing

Two new leaflets are included in this seasonal mailing. One is *A Conversation with Thomas F. Plaut*, an adaptation from "The Human Condition" radio series.

The second brochure describes a new book, *Chicano Mental Health: The Case of Cristal*, which is available from the Hogg Foundation Publications Division.

Mailing List Procedure

Many have inquired about being placed on the Foundation's mailing list. There is no fee involved—just your desire to have your name there. You need only inform the Publications Division of your wish to receive the mental health materials mailed at intervals throughout the year. The form below may be passed on to anyone who has expressed an interest in this service. *Please give us a change of address before you move if you are already on the list.*

The Hogg Foundation for Mental Health, Box 7998,
The University of Texas, Austin, Texas, 78712

☐ Addition to Mailing List ☐ Change of Address for Mailing List

Name _____

New Address _____

City _____ State _____ Zip Code _____

Old Address _____

City _____ State _____ Zip Code _____

The Hogg Foundation for Mental Health

P.O. Box 7998, University Station
Austin, Texas 78712

Executive Committee

Wayne H. Holtzman, PRESIDENT
Bernice Milburn Moore
Bert Kruger Smith
Charles M. Bonjean
Reymundo Rodriguez
Terrence R. Tutchings

News Editor

Charlene Warren Mann

The Hogg Foundation News is an informational newsletter published at intervals throughout the year for the benefit of readers on our mailing list.