

### Course Change Announced For M. E. Curriculum

Seniors Will Have More  
Liberty in Choice Of  
Subjects

### Electives Listed

New Plan Allows Studies  
Of Benefit After  
Graduation

A change of the mechanical engineering curriculum, which involves a change in the teaching of Feed Water Treatment and Fuels, known as Chemistry 412f, and more liberty in the choice of electives by senior students, was announced by H. E. Degler, professor of mechanical engineering, Monday. Feed Water Treatment and Fuels will be given in the junior year instead of in the senior year and will be listed under the new number, Chemistry 342s.

"In the senior year," Professor Degler said, "there will be one 3-credit elective each semester from which the student may choose such courses as will be most useful to him after graduation. These changes were passed recently by the engineering faculty in order to make the curriculum in mechanical engineering more attractive to a larger number of students," he added.

### M. E. Electives Listed

Mechanical engineering courses classified as electives under the new ruling include Pumping Machinery, Heat Treatment and Welding of Metals, Heating and Ventilation, Refrigeration, and Internal Combustion Engines.

Other courses included are advanced mathematics, physics, business law, economics, structural design, and public speaking.

### Group Helps Obtain Teaching Positions

"It is very important for all those students who are interested in obtaining teaching positions for the coming year to attend the meeting which will be held Tuesday afternoon, February 17, at 3:30 o'clock in Garrison Hall 1," Miss Miriam Dozier, secretary of the teachers' appointment committee, said yesterday.

Students will be aided by the committee by being put in touch with vacancies, by having the committee write letters of recommendations for them, and by having their applications put on file with the committee for school officials to refer to.

At the meeting this afternoon Miss Dozier will distribute registration forms and will instruct those present in filling them out. The forms will not be filled out at the meeting but are to be returned to the office of the committee at the convenience of the registrants. Instruction will also be given on how to make applications to school officials, and the importance of co-operation between prospective teachers and the committee will also be discussed.

### Echoes' Is Subject Of White's Lecture

Dr. W. R. White of Dallas, executive secretary of the Baptist convention of Texas, lectured on "Echoes" at the University Baptist Church Monday night. This was one of a series of lectures that Dr. White will deliver this week.

Dr. White spoke on the average man and his life and environment as "echoed" through him. He took the phases of the man: his church, his place as a member of community, and the man's children as an echo of him.

Dr. White said that every organization is an echo of its members. He said that the church echoes what each member does or does not do, just as words and deeds reflect the attitude and thoughts of a person. Dr. White said that in a large sense "eternally" will be the echo of time.

Dr. White will speak Tuesday morning at 10 o'clock and Tuesday evening at 7:30 o'clock.

### BAND MEETS TONIGHT

The Longhorn Band will meet for rehearsal in Wall Hall tonight at 7 o'clock. Burnett Pharr, director of the band, stated Monday.

### TAKE REAGAN PICTURE

The Reagan Literary Society will meet Tuesday afternoon at 4 o'clock to have the picture taken of the Cactus.

## Woodruff Frames Bill Proposing Restriction Of Collegiate Athletics

Senator Grady Woodruff announced yesterday that he will introduce a resolution in the legislature in a few days which will suggest that inter-collegiate athletics be restricted at State supported schools. Senator Woodruff believes that the schools throughout the State are giving too much time to college athletics. Woodruff also points out that it is costing the State money each time an athletic game is played.

"The emphasis on college athletics is costing the State money. Whenever an athletic contest is played out of town, students usually take off Friday and Saturday to see the game. At school, however, the teachers have to teach just the same, although there may not be more than one student present."

Everyday a student misses school it costs the State more than \$4, according to Senator Woodruff's opinion.

Senator Woodruff explains that the resolution which he will introduce will be a warning to the schools to restrict inter-collegiate athletics. If the schools fail to observe the warning, bills will probably be introduced in the legislature later.

## Austin Enrolls In Commercial Health Contest

### Wallace Points Out Defects In Local System In Talk Monday

A health conversation contest, being carried out by the Chambers of Commerce in the various cities of the United States, has Austin as one entrant. Carl Mueller, local merchant, has been made chairman of the Chamber of Commerce commission on this inter-chamber contest.

Monday, Dr. James Wallace, chairman of the national committee on this project, gave a talk to the representatives of the various organizations that are most interested in the workings of the health project, in which he pointed out defects of the public-health system in Austin and how it could be remedied. Also, he outlined the plan of the inter-chamber contest.

Dr. Wallace said that ten years ago the national Chamber of Commerce sponsored a fire waste conservation contest and was so successful with it that last year they decided to try a health conservation contest. "This contest," he said, "has a two-fold purpose: to bring the business men and public health officials into closer contact so that they will work together, and to be effective in reducing the amount of illness and untimely death."

## Law Society Holds Moot Court Tonight

The trial case of Martinez vs. Singleton case is on the docket for the moot court of the McLaurin Law Society, which will be held tonight at 7 o'clock in the Law Building, M. L. Cook, president, said.

The case arose from a bet made between Martinez and Singleton on a pool game. After losing the bet Martinez learned that there had been cheating in the game and immediately filed suit against the defendant for recovery of his money.

Attorneys representing the plaintiff are W. D. Masterson, Ford Chauncey, Glendon Roberts, and Frank Carpenter, and the attorneys for the defendant are W. D. White, Ben Bird, Fernando Uribe, and Julius Franki.

## Present Day Club Will Hold Banquet

The proposed meeting of the Present Day Club Tuesday night, February 17, has been postponed until Tuesday night, February 24, Mildred Basford, treasurer, said Monday.

At that time the club will meet at the University Commons at 6:30 o'clock for the seventeenth anniversary banquet. Count Carlo Sforza, Italian statesman, will be guest of honor.

Invitations to the affair are being extended to all former members of the club in Austin at the present time. Anyone formerly connected with the club is urged to get in touch with Mildred Basford at B. Hall 119.

Gwyn Sellers, chairman of the social committee, is in charge of arrangements for the banquet.

## Registrar Asks Old Students To Report Present

All students who have not reported "present" for the second semester must do so at the Registrar's office today, E. J. Mathews, registrar, announced Monday. This is a University regulation and consists merely in filling out a particular card.

Mr. Mathews said that officials in the Registrar's office are now checking up and that the names of all students who have not reported present will be dropped from the University rolls.

### CLUB DATES CHANGED

The Men's Glee Club will meet Monday and Tuesday nights as usual instead of Wednesday and Thursday nights as announced, Bill Dyer, president, stated Monday.

### JUNIOR CABINET MEETS

Helen Cheney will lead the meeting of the Junior Cabinet of the Y. W. C. A. which will be held Tuesday evening at 7 o'clock in the Y. W. C. A. room.

### MEETING POSTPONED

Y. M. C. A. Cabinet will not hold its meeting as scheduled Tuesday night, but will meet Thursday night instead at 7 o'clock at the Y. M. C. A.

## 'Less Athletics'



SEN. GRADY WOODRUFF

## Assembly's Play Offering Given Fair Reception

### A REVIEW

The audience that filled half the gym greeted The Shakespeare Players with no ovations, no roars of applause, but with silent, respectful interest. As everyone, who knows the University realizes this in itself is sufficient praise. The fact that not a soul walked out before the performance was over shows that the students enjoyed themselves.

Let John Hendrickson take it to heart that he was tittered at when he died so easily and with such obviously poor fencing at the hands of the redoubtable Macduff. It was warm laughter, friendly laughter, laughter because the scene did not live up to the student's idea of realism.

### Cast Average

The cast on the whole was average. All had their great moments, but they were moments only. Macbeth, as interpreted by John Hendrickson, was a rather loutish, sentimental villain, who seemed to take little joy in his wickedness, was at his best when frightened or very wary.

In her first scene Claire Bruce, as Lady Macbeth, spoke her lines like a stump politician. During the play, however, she seemed to grow less formal and the bloody spotches stuck to her hands she moved the audience as it was moved at no other time during the play. Throughout the blood and thunder, the shouts and bellows of her too excited fellows, she moved delicate and beautiful, her flowing robes always adding atmosphere to the otherwise rather uninteresting costumes.

### Malcolm Excited

Duncan, the King, drawled like a sleepy farmer gossiping about crops in the country store. John C. Hickey, as Banquo, would have been excellently cast as the porter. Macduff swaggered and roared just as one would expect a nobleman of the Middle Ages to do. Malcolm, the awkward boy, trying to assume a regal air was excellent, except when he shouted. That, it seems, was the worst fault of the production. More heed should have been paid to Shakespeare's warning to the players; less shouting and more attention to the pronunciation of the words, the flow, the rhythm, and the poignancy of the lines would have made a much better play. A good actor, indeed, it takes to shout effectively.

Best effect and scenes: The towering black shadows that followed the actors about the dim stages while Duncan was being murdered; the porter, very drunk; the very subdued banquet, at which none of the guests raised their voice above a whisper; after the banquet, when the two royal murderers wearily doff their crowns, sit down comfortably on the steps of the throne, and, losing all their manner, become tired humans.

A remark, overheard while leaving the hall is worthy of note: "The most poignantly tragic thing about the play is that poor old Macbeth wore the same suit of clothes throughout the play, a period of some seventeen years." Macbeth as The Shakespeare Players presented it, was an excellent melodrama with a few high lights of tragedy.

### HUBBARD LEADS

In the honor roll, which was announced Saturday by T. U. Taylor, dean of the College of Engineering, Arthur Francis Hubbard of Austin, highest point man in the College of Engineering, was erroneously referred to as living at Kennedy. Dean Taylor said Monday, Hubbard made an average of 73 points in the first semester.

## Pi Sigma Alpha Sponsors Annual Essay Contest

Government Discussions  
Must Be Submitted  
By April 1

### Prizes Offered

### Three Faculty Members Serve on Special Committee

University students have been invited to participate in the annual essay contest sponsored by Pi Sigma Alpha, national honorary fraternity in the field of government, according to the statement of Dr. O. Douglas Weeks, chairman of the department of government. Awards of \$25, \$15, and \$10 will be given as first, second, and third prizes for the best essays on designated topics in some phase of government. The essays must be about 5,000 words in length and must be submitted prior to April 1.

Different subjects are chosen each year, and the prizes are awarded by a committee consisting of three faculty members chosen from the department of government and four officials of the local chapter of the fraternity. The contest is open to all undergraduate students who have completed a minimum of three semester hours in advanced government.

Pi Sigma Alpha was founded by the staff of the department of government at The University of Texas. The national chapter was founded here in 1919 and Alpha chapter was established here the following year. The second chapter was founded at the University of Oklahoma, and the organization has grown until there are now seventeen chapters located in colleges and universities over the United States. Dr. C. P. Patterson, professor of government at the University, is national president.

## Extension Bureau Offers New Courses

Two new courses, Commercial Aeronautics, and American History, will be offered by the extension teaching bureau in the near future.

The course in aeronautics will be under the supervision of M. M. Heller, instructor in mechanical engineering, and will be a study of the principles of flight, theory, construction, and operation of heavier-than-air machines.

Included in the course will be history of transportation, aerodynamics, airplane construction, gliding, arial photography, navigation, instruments, engines, maintenance, and aviation law. The course will not carry college credit.

The history course will be under Daniel McArthur, special instructor in history. This course will be equivalent to one year of high school history and will carry one University entrance credit.

## Ayer Will Address Educational Group

Dr. Fred C. Ayer, professor of educational administration, will leave Austin Thursday to address the department of superintendence of the National Educational Association at a convention in Detroit, Mich., from February 21 through February 24.

Subjects on which Dr. Ayer will speak are "Seven-grade versus the Eight-grade Elementary School," "Changes in College Administration During the Past Forty Years," and "Supervisory Objectives for Small Cities."

Dr. Ayer will represent Dean B. F. Pittenger at a meeting of the National Association of Colleges and Departments of Education February 21.

## Scandinavian Club Will Have Program

The Scandinavian Club will meet Tuesday for a social gathering at 8 o'clock for a social gathering at the home of Mrs. A. O. Sanbo, 1506 San Jacinto Street, Alyce Swenson, president, has announced. A short program will be presented at the meeting.

The club meets the second Tuesday of each month, and all Scandinavian students are invited to attend the meetings.

## SARAH HUNDLEY RETURNS

Sarah Hundley, secretary to W. D. Hornaday, director of publicity, has returned to her work after being called away because of the illness and death of her mother.

## Sorority Rush Week Plans Laid by 16 Campus Groups

### Display of Finery Heralds Coming Activities

By MARY LEE WESTON

Just as the nervous-like, high-powered motor cars that have miraculously made their appearance with the beginning of this week bespeak the air of "rushing," so did the entrance of approximately two hundred co-eds, dubbed "rushes" at this particular season, as they seated themselves Monday afternoon in the auditorium of the Law Building for the Rush Week convocation which ushers in the highlight of Greek society activities on the campus. Resembling maidens of long ago as they presented themselves for favor before Athenian demi-gods, there were modern maidens who came to hear to the proclamations of the deanery of the University. The excited bubble of conversation ceased as Dean V. I. Moore mounted the platform to set down the rules and regulations and to prescribe the obligations owed to members of "Tapakegabear" and "Etahitapie" as they did their best to ensnare the innocents whom they dated.

### Invitations Sent Saturday

The invitations for dates which were sent to the rushes Saturday were accepted according to a ruling of the National Pan-Hellenic Board that a rushee must accept and keep dates with at least two sororities if more than one sorority asks her for dates. Mary Ruth Holmes, president of the local Pan-Hellenic stated in an outline of the Pan-Hellenic rules of rushing. These rules embody a restriction against rushing by men called "manless rushing" which states that no girl may receive telephone calls, communications or dates with boys for the time that the first dates are held to 7 o'clock Saturday night. Pan-Hellenic also decrees that there are to be no broken dates, no split dates, and silence from Wednesday, February 11 at midnight until February 21 at 7 o'clock, no gifts or flowers to rushes, and attendance at the convocation conducted by Pan-Hellenic, Saturday, February 20, at 10 o'clock.

Dean Moore outlined the rush periods which total six and number two a day between the hours of 3 and 5:30 o'clock and 7 and 10 o'clock from Wednesday through Friday. At the conclusion of the last date at 10 o'clock Friday night all rushes will meet in the auditorium of the Law Building, where under the supervision of Pan-Hellenic and without communication to others, they will be given sheets upon which to list sororities in preferential order, from whom they would be willing to accept bids.

Dean Moore urged the rushes to think well before signing the preference slips as it is a strict ruling that all preferences shown at this time would be absolutely binding. In his words, "girls will place upon their slips their first, second, and third 'hopes' which are to be signed, sealed and turned in before they leave the room."

### Dean Checks Preference

These sheets will be turned into the office of the dean of women, where they will be checked with the bids turned into her office Saturday morning at 8:30 o'clock. Under this system it will be well for the rushee to list several sororities as she may not be bid by the one she places first, Dean Moore emphasized.

The sorority with whom rushes have the Friday night date takes them to the Law Building. The members of the sororities who serve as escorts are not to be Pan-Hellenic representatives. Girls who do not have Friday night dates will go by themselves to the convocation.

As a fitting climax to the detailed and strenuous application of rules, each rushee will go to the girl's study hall Saturday afternoon at 3 o'clock to receive the all-important white envelope containing her bid. Rush captains may go to the office of the dean of women promptly at 4 o'clock to copy lists of the pledges of their group. At 7 o'clock Saturday night she will adjourn to the house of the sorority whose bid she has accepted. Open house will follow from 7:30 o'clock to 9 o'clock at the various chapter houses. Pledge Night dance will be held in the Gregory Gymnasium from 9 to 12 o'clock.

### Rule Breaking Bars Pledging

In regard to adherence to rules, Dean Moore emphatically stated that "breaking of rules means breaking of rules."

(Turn to Page 3)

### Sforza Speaks On Problems Of Peace in Europe

### Lecturer Gives Discussion Of Newspapers And Democracy

"Relations between France and Germany are the central problems of European peace, all else is independent of the situation," said Count Carlo Sforza in his lecture Monday afternoon at 4 o'clock in Garrison Hall auditorium. The main cause for the disturbance is the fear of France and Germany of mutual incomprehension, he said.

The reason for general dislike of all things German, Count Sforza believes, is the desire of the Germans to teach and their inclination to do it dictatorially.

In speaking of freedom of the press, Count Sforza said, "present newspapers have a gigantic hurt for democracy. Bad news pays; good news does not."

He does not believe in curtailing the freedom of the press, but he sets forth the idea of an international tribunal of great newspaper men to suppress sensationalism and great fallacies.

"In Europe what is wanted is peace; only the leaders have not come to create the formula," Count Sforza said.

### Visiting Professors To Make Inspection

Goldwin Goldsmith, professor of architecture, announced Monday that a committee of architects will arrive Wednesday, February 18, to make an investigation of the department of architecture of the University.

The committee is composed of Professor F. H. Bosworth, former dean of the School of Architecture at Cornell University and past-president of the Association of Collegiate Schools of Architecture, and Professor Roy Childs Jones of the University of Minnesota, secretary of the association. The committee will be at the University from February 18 to 21, and will report their findings to the executive committee of the association, of which Mr. Goldsmith is a member. The report will be made at a convention to be held in San Antonio April 20 and 21.

Professors Bosworth and Jones will investigate the standards of the various schools of architecture, the general curriculum, the character and number of the faculties, physical equipment, and the amount of appropriations made to them.

The expenses of the investigations are being paid by the Carnegie Corporation.

### Writers Name Two New Club Members

Alan Lomax and Marcia Todd were elected to membership in Scribblers at a meeting last week, Helen Engleking, secretary, announced Monday.

March 10 is the date of the next meeting of the society. It will be the first attended by the new members.

### DR. HARPER IMPROVES

Dr. Henry W. Harper, dean of the Graduate School, who has been ill for several weeks, is slowly improving, Banner Grege, Dr. Harper's physician, stated Monday.

### OFFICER TO MAKE VISIT

G. Herbert Smith, who is coming to Austin as the installation officer of Phi Eta Sigma, will arrive in here at 12:15 o'clock Tuesday. Mr. Smith will hold the installation at 4 o'clock and will leave at 11 o'clock Tuesday night.

### Polly Pays Visit To Clark Field

Monday's balmy weather evidently beckoned a parrot as well as the students to the outdoors. For a very brightly-hued parrot was seen perched upon a tall tree overlooking Clark field.

From his lofty perch, he either offered sarcastic comments upon the work of Uncle Billy Disch's baseball players or gloated over his escape from his home adjoining the ball park.

### Teas, Luncheons, Parties For Rushes

A kaleidoscopic view of rush week activities which will burst in an effervescent bubble of colonial, Spanish, George Washington, and seated teas; Hawaiian, football, Chinese, French, Italian, and Spanish dinners; formals and informals, Wednesday afternoon and night, is presented for campus delight as rush captains divulge their plans for initial parties and receptions. The "take-off" will be at 3 o'clock Wednesday afternoon.

### Alpha Chi Omega

Alpha Chi Omega will entertain with a colonial tea at the chapter house, 2500 Whitis, from 3 to 5:30 o'clock. As a special feature of the entertainment there will be dances executed in colonial costume. The traditional Hawaiian dinner will be given Wednesday night, with Hawaiian decorations, Hawaiian program, and Hawaiian menu. Louise Starley is in charge of arrangements for the dinner, Christine MacElreath, rush captain, has announced.

### Alpha Delta Pi

A George Washington tea will be given by the Alpha Delta Pi's at the home of Mrs. Thelma Balm in Enfield. The decorations will carry out the motif of the occasion. Sarah Turk will be in charge of the night club dinner which will be given at the chapter house that night. The details of the decorations for the dinner are being kept secret. Myrle Daunoy is rush captain.

### Alpha Epsilon Phi

Natalie Levin, rush captain of the Alpha Epsilon Phi's, announced that Josephine Davis, Rika Alexander, and Mildred Lippe will be in charge of a buffet supper carrying out the football idea at the chapter house Wednesday night.

### Alpha Phi

Mrs. E. E. Berwick will entertain with a formal tea at her home, 1320 Windsor Road, for the Alpha Phi's. Evelyn Thompson is in charge of the decorations. Tap dancing and a French program will feature the dinner at the chapter house, Betty Bundy, rush captain, stated.

### Alpha Xi Delta

Alpha Xi Delta will hold a Mexican seated tea at the home of Mrs. D. W. Smith, 108 Sparks Avenue, Vivian Smith, rush captain, announced. The committee in charge, Louise Hinyard, Evelyn Butler, and Aline Lay, will arrange the Mexican decorations and program. An Italian dinner at the home of Mrs. E. B. Crowder, 703 West Lynn, will feature the evening. Gondolas and guitars, tap dancing and accordion playing will compose the entertainment, arranged by Hartley Haigler, Bertha Zimmerman, Jacqueline Day, and Ester Hall.

### Chi Omega

Helen Donovan, rush captain for Chi Omega, announced that Mrs. M. H. Boerner will entertain for the chapter with a formal tea at her home Wednesday afternoon. The color scheme will be orchid and yellow, carried out in irises and jonquils. A formal dinner at the home of Mrs. Charles Marsh will close the program for the day.

### Delta Delta Delta

Either a pansy or colonial motif will be the theme for the first tea that the Tri-Deltas are planning for their rush week program, Margaret Montgomery, rush captain, announced. In the evening, a dinner, carrying out a nautical motif with ships and sailors predominant in decorations and program numbers, will be given at the house.

### Delta Zeta

A formal tea at the chapter house will feature the Delta Zeta rush week party for Wednesday afternoon. Helen Buckley is in charge of the tea. A treasure ball is to be the theme of the dinner to be given at the house Wednesday night with Stella Culotta in charge. Ann Cook is the rush captain.

### Gamma Phi Beta

The Gamma Phi Beta chapter house, 612 West Twenty-second Street, will be decorated in the sorority flower, pink carnation, for an informal tea Wednesday afternoon, according to Isabelle Mayes, rush captain. Courtney Ward and Joyce Burt will be in charge of a Chinese dinner to be given that evening. The menu and decorations will carry out the Chinese motif, as will also the entertainment.

### Kappa Alpha Theta

A tea at the home of Mrs. Wal-

(Turn to Page 2.)



# The Daily Texan

Established 1899

The Daily Texan, student news publication of the University of Texas, is published on the campus of the University at Austin by The Texas Student Publications, Incorporated, every morning except Monday throughout the long session, and every Tuesday, Thursday, and Sunday morning throughout the summer session.

Editorial Offices: B. Hall 120, 122, 127, and 135. Telephone 9181-61. (After 10 p.m. 9187.)

Business Offices: B. Hall 119. Telephone 2-8164 and 2-8165.

Printed by the University Press, A. C. Wright, Manager. Entered as second class matter at the postoffice at Austin, Texas, May 1, 1909. Postoffice No. 100.

Subscription price by mail: Five Dollars Yearly.

Editor-in-Chief: DAVID HALL  
Associate Editor: MACON BODDY

Editorial Department: A. A. Ostrow, Alan Lomax  
Zollie C. Steakley, Walter H. Payne

Sports Editor: Weldon Hart  
Assistant: Albert Reese, D. B. Hardeman, W. B. Cowley, Ross Carr

Society Editor: Mary Lee Weston  
Assistant: Helen Blanton, Mary Josephine Surber, Bertha Zimmerman, Althea Klump, Anamary Davis, Zula Williams

Staff Artist: Sam Nash  
Dramatic Criticisms: Violet Richardson

The editorial board of The Texan solicits the writing of free-lance editorials or "firing line" articles to be published in the Student Forum columns.

Such editorials must be written by University students and must pertain to some phase of student life.

All contributions must be signed, but the contributor's name will not be printed, if he so requests. Unsigned articles will not be printed.

Those of 200 words or less will receive preference.

## FOR THIS ISSUE

Night Editor: Mary Louise Staley  
Assistant: Marvin Garrett.  
Night Reporters: Rosaline Frieden, and Elizabeth Morris.

## EMPLOYMENT TO GRADES

Recently the University of Minnesota, with a single faculty member as its agent and a flock of questionnaires as the technique, set about to get the inside facts on students who work their way through college. Though the questionnaire distribution is sadly over-rated as a sure-fire method for gaining statistical information about everything from the consumption of artichokes to the question of what happens to used razor blades, the results of the investigation at Minnesota are at least good reading matter.

On the whole it was found that moderate employment did not materially lower a student's grade. Self-support involving the earning of 100 per cent of expenses did lower grades somewhat. It was found that although employment made it rather inconvenient, many students were able to engage in extra-curricular activities. First year workers showed a tendency to participate more in literary societies work, student government and Y. M. C. A. activities and less in athletics and social matters, but even that difference seems to disappear after a longer stay at the school.

Interesting it is to note that the findings showed that students from well-to-do families who worked out of a desire to do so earned an aggregate total which was greater than that earned by students from poorer families. So far as the ranking of the occupations was concerned, they rank in the following order in frequency: clerking, restaurant work, nursing, general office work, housework, stenography, salesmanship, oil station work, teaching, and forestry.

Whether it is merely say-so or fact is hard to tell, but out of 470 students who were asked what disadvantages they found in earning while at college, an overwhelming majority denied that they encountered any. Very few would admit that it interfered very seriously with their social or extra-curricular activities. For many the employment merely provided funds for matters of a social nature. Perhaps it is due to the influences peculiar to the Minnesota campus, but a large number of the questioned students upon being asked what they would do with the time if they did not work said that they would go in for athletics.

Although each campus has its own particular external influences and motivating conditions, the finding of the Minnesota professor seem to be at least a fair index of the conditions as regards students in relation to employment as it exists on almost any other state university. Student employment is no longer the exclusive for any others but poor students, but is becoming recognized more and more as a sincerely desirable part of college training even on the part of students with parental means.

Yes, the intellectuals always have microscopes before their eyes.—Professor Albert Einstein.

## TRADE AND TRADE PARALYSIS

Curtailment of commerce as a result of the pressure from war debts and tariffs is the cause of the economic depression in the opinion of William Clayton, who spoke here Saturday. The United States, as the richest nation of the world, is being looked to as the savior of the situation.

The cry is heard in the United States that the cause of the depression was over-production; and the claim is made that international trade is the cause of the trouble; and then the claim is also made that the whole thing was psychological. There have been numerous explanations of the causes and proposals for relief of the hard times which have prevailed in the country since last year. But no two seem to have the same idea in common. It must be borne in mind that the periods of depression always follow periods of inflation. The world war broke into the sequence of things, at a time when the economic world was normal. Because the United States was not in the war at first, the demand for American goods was enormous. There was a boom in American industry. There had to be a break; and then fol-

lowing it came the period of depression. When the Federal Reserve System was put into operation in 1913, there were those optimists who felt that the bank would be able to prevent the recurrence of those periods of hard times which had come over the country in cycles of about twenty years.

But when the crisis came, the Federal Reserve System did nothing. The laws of economic consequence went on just as they had in the past. There will be explanations of the depression and suggested remedies; but as in the past the recommendations come just as the depression is being lifted.

Just as the people are fully realizing the forces that caused the depression, there will be new forces which will bring the world back to normal. Perhaps the war debts owed to the United States had more to do with the hard times in this country than most people realized. But just now the pendulum is beginning to swing back to normalcy; and all the explanations and reliefs will have come too late.

Our idea of harmony is a freckled-faced girl in a polka-dot dress leading a giraffe.

## College Press

"Too expensive"—too complicated—"interferes too much with classes and study"—these are some of the objections sorority women add to the much-deplored "C" average ruling which is being attacked as responsible for the decreasing number of pledges ever since the adoption of the deferred rushing plan at Minnesota.

The replies to a questionnaire, circulated by The Minnesota Daily after the winter rushing week, the most disastrous season the University sororities ever experienced, also heaped invectives on the "silence week." A large proportion of the co-eds answering the questionnaire termed the rule "unfair," "fostering an unfriendly atmosphere" and "silly."

Several declared a rule which prevents actives from associating with potential pledges off the campus sometimes tends to break up established friendships.

"The plan is very unfair as far as the 'C' average goes. The deferred rushing scheme is all right," one woman said. "The reason it passed Pan-Hellenic last year, I feel, is because the sororities were more or less obliged or forced to because of faculty wishes and so forth."

Another active member declared, "Deferred rushing interferes too much with classes and studying. Also all the hubbub is over when school starts if rushing week precedes the first week of the fall quarter."

The president of acampus sorority chapter declared, "I feel that any chapter which conscientiously tries to observe the rushing rules as they now stand is at a decided disadvantage. I believe that the use of 'undue influence' during the rushing period is common and that 'law-abiding' chapters do not stand a chance. Either the rules must be amended so that they will be observed or all chapters must be allowed to take equal advantage of exceptions."

Several students aired objections to the "C" average for pledging.

The idea of waiting for girls to make a 'C' average brings the sororities too much into prominence," was the lament of one active sorority member. "I have good friends who did not make their average last quarter and whom, according to Pan-Hellenic, I cannot see yet. I have to hold my sorority between us and yet my group ma not even care to rush them—making it more embarrassing for me. Pan-Hellenic keeps me from being a good friend. Can Pan-Hellenic be a good force on the campus and et foster that?" —Minnesota Daily.

Ohio State University has added a course in table-waiting for those who work their way through college.

## THE CAMPUS BLACK SHEEP

Nebraska's official jester, reflector of campus humor, peddler of wit and comedy, makes its bow once again before the student body and the publications board critics. The first Awgwan to appear since the magazine was banned in November, 1929, it will undoubtedly contain the purest of the pure among its varied wisecracks.

The nature of the contents of the previous numbers was not the only reason the publication was discontinued. A more vital consideration was the ever-increasing deficit piled up by succeeding staffs.

Today the black sheep is once more in our midst. With no national advertising in its pages, with every bit of the profitable tobacco and cigarette advertising excluded, the magazine appears with no red ink figures in its trail. It has not made a profit—time for soliciting advertising from national concerns was too short to allow that—but it has at least paid its way.

Sigma Delta Chi has worked hard to make the returned comic a success and deserves congratulations. But there is one element involved that makes permanent success dubious. At present, enough subscriptions have been placed to assure a satisfactory circulation. Will students continue to buy and support a magazine that keeps its pages clean of shady humor?

If Nebraskans are so constituted that they cannot enjoy any comic publication that is not more or less dirty, the Awgwan will fail again. If they can enjoy clean humor, it will succeed. We wish it success.—The Daily Nebraskan.

There are only 27 moving picture theaters in the province of Szechwan, China, although the province has a population of sixty million people.

Less than eight per cent of the families of this country have annual incomes in excess of \$5,000.

Tests made at New Jersey College for women indicated that sophomores are less liable to believe untruths than juniors.

One of the new rules on the University of Omaha campus is that all students under 18 years of age are locked up if found on the streets after 9 o'clock.

## HAROLD TEEN—LOVE MY DOG, LOVE ME



WHEN YOU BUY A VASE CHEAP—LOOK FOR THE FLAW—AND WHEN A MAN OFFERS FAVORS SEARCH FOR HIS PURPOSE—



## around the perip

"BABS" MAXSON, fresh from S. M. U. don't mind admitting that gawf is her favorite sport.

Where is JIMMY MILLER and his attachment for a brown-eyed blonde?

LOGAN KNAPP and GEORGE GALVIN giving the high-sign.

The BUZZARD agrees with most everyone that DR. MICEK makes a swell "Big Brother."

WALTER HOWLE rating a real date.

JOHN MAY holding forth about BETTY MULLIS.

Often wonder at WALTON MORRISON'S bump of curiosity.

Big CHARLEY LEINBACH strolling up and down the sunny side of the drag.

## Official Notice

The Official Notice column of The Texan is reserved for use by University faculty members who wish to make official announcements concerning University work. Student notices will not be printed.

"REPORTING PRESENT" at the beginning of the second semester is required by University regulations. This act consists simply in filling out a particular card for the purpose. We are now checking up.

It will be assumed that all students for whom we do not have this card have left the University and their names will accordingly be dropped from the rolls. Any student who forgot to fill out the card may do so by calling at the Registrar's office immediately. E. J. MATHEWS, registrar.

UNIVERSITY Advanced Fellowship of \$500 is open to gradu-



Another reason for selecting Corona—the famous portable typewriter for 20 years. See the 'C' model Corona furnished in the new utility case.

At No Extra Charge

Corona is the only standard portable not factored to a bulky, cumbersome. Standard keyboard, single shift, six color combinations. Easy payments.

\$60.00

Including utility case

DIAL 6-0-6-0

E. E. BARROW  
Typewriter Co.

906 Congress

with Everybody's Book Store

## Teas, Parties, Luncheons Feature Rush Week Activities

(Continued from Page 1)

ter Benson, 1704 West Lynn, will feature the afternoon for the Kappa Alpha Thetas. The decorations will consist of orchids and pinks, Elizabeth Autry, rush captain, stated. In the evening the Theta house will lend itself attractively to the theme for their Spanish dinner.

Kappa Delta  
A formal tea at the house with Fanny Spessard in charge will feature the opening rush party of the Kappa Delta's Wednesday afternoon. Mrs. Joe Prowse, 4309 Duval Street, will be hostess for a Spanish dinner Wednesday evening. Josephine Prowse, chapter member, is in charge of the dinner.

Phi Mu  
Mrs. H. E. Wattinger will entertain with a tea at her home, 901 West Sixth Street, for the Phi Mu's, Aline Yett, rush captain, announced. The evening will close

ate students of at least one year standing. Applications must be made immediately at Sutton Hall 107. Signed: DR. CHARLES W. RAMSDELL, chairman of the committee on fellowships and scholarships.

BECAUSE OF THE T. C. U.—Texas basketball game Tuesday night, the swimming squad will hold practice in the afternoon from 3 to 5 o'clock. Notice bulletin board for assignments of workouts.

C. J. ALDERSON.

## Fellowship of \$500

Open to Graduates

University advanced Fellowship has a vacancy caused by the illness and withdrawal of W. P. Davidson, announced Dr. Charles W. Ramsdell, chairman of the committee on fellowships and scholarships.

This fellowship covers a stipend of \$500 and open only to graduate students of at least one year standing. Applications are to be made at the office of the Dean of the Graduate School, Sutton Hall 107. Those who desire to apply must do so immediately, stated Dr. Ramsdell.

Others who have received this Fellowship are Clarence Allen

ner. Fitting decorations carrying out the theme of the dinner will be appropriately used in the house. Jessie Walker is rush captain.

Kappa Kappa Gamma  
Kappa Kappa Gamma will entertain with a formal tea Wednesday afternoon, Elise Jester, rush captain, stated Monday. The chapter house will be decorated in silver and black for a futuristic party in the evening. Purple tulips will be used throughout, and special music will be offered.

Phi Mu  
Mrs. H. E. Wattinger will entertain with a tea at her home, 901 West Sixth Street, for the Phi Mu's, Aline Yett, rush captain, announced. The evening will close

Bridges, B. A., M. A., of Denton; Sarah Lewis Carol Clapp, B. A., M. A., of Bowie; Joseph Lynn Clark, B. A., M. A., of Huntsville; Samuel Newton Gaines, E. E., M. A., of Fort Worth; Carlos Prado Kling, B. A., M. A., of Marlin (resigned); Lawrence Henry Moore, B. A., M. A., of Denton; Arthur McCullough Sampley, B. A., M. A., of Austin; Richard Rollin Stenberg, B. A., M. A., of Austin; Palmer Allan Throop, B. A., M. A., of Austin (resigned).

## Sutton Teachers' Club Chooses Pin

Members of the Sutton Club have selected a pin, which is made up of the school initials, "T. U.," symmetrically arranged with "Sutton Teachers' Club" in raised letters on the letter "U." The accepted design has been subjected to several Austin jewelers for bids. A high quality pin with a 25 year guarantee was the one selected.

Members who desire a pin are asked to mail \$2.50 to the committee chairman, A. H. Hanzen, at 2714 Nueces Street or to give the sum to a club officer, Hanzen has announced. He said that all deposits must be in before the end of this month.

FIRST CHURCH OF CHRIST, SCIENTIST OF AUSTIN, TEXAS  
ANNOUNCES A FREE PUBLIC LECTURE ON  
CHRISTIAN SCIENCE  
BY  
FRANK BELL, C. S. B.  
OF NEW YORK, N. Y.  
MEMBER OF THE BOARD OF LECTURERSHIP OF THE MOTHER CHURCH, THE FIRST CHURCH OF CHRIST, SCIENTIST, IN BOSTON, MASSACHUSETTS  
TUESDAY EVENING, FEBRUARY 17, 1931, 8 O'CLOCK  
ROOF GARDEN, AUSTIN HOTEL  
THE PUBLIC IS CORDIALLY INVITED TO ATTEND

## ANNOUNCING OUR NEW LOCATION

—AT—  
1701 Guadalupe—Phone 2-1124  
We Deliver to All Parts of the City.  
BEN GARZA'S CASH MARKET  
Meats, Fish, Oysters, and Poultry  
1701 Guadalupe Street

## PK An Appetizing Order

Sliced Chicken Sandwich with Lettuce and 1000 Island Dressing.

## P. K. SANDWICH SHOPS

No. 1 Opposite New Driskill University  
No. 2 Opposite University

"You Don't Wait on Us"

## Believe It or Not The Laundry does it best.

Give us a ring.  
ALWAYS DIAL 6444  
DRISKILL HOTEL LAUNDRY

with a French doll dinner set off by a pink and green color scheme.

Pi Beta Phi  
A tea at the home of Mrs. J. W. McClelland on the Mount Bonnell road, overlooking Lake Austin, will form the afternoon entertainment for Pi Beta Phi sorority. Jonquil and calendulas will be used throughout the house. The tea table will have as a centerpiece an attractive floral arrangement of orchids. Bill Barbour's orchestra will furnish the music. A surprise dinner will be given at the house Wednesday evening. Daphna Grisham is rush captain.

Phi Sigma Sigma  
A collegiate bridge, with fitting decorations of pennants, programs, and other campus oddities,

will be the opening party for Pi Sigma Sigma sorority Wednesday afternoon. A George Washington dinner with colonial decorations is to be given at the house Wednesday night. Maurine Kranso, rush captain, is in charge of the parties.

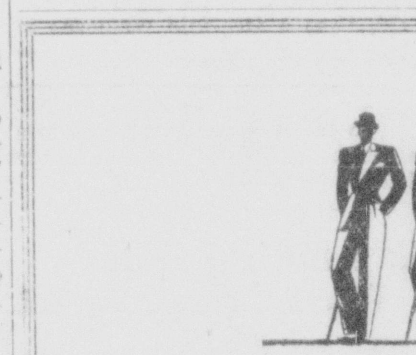
Zeta Tau Alpha  
A tea, given at the home of Mrs. R. Niles Graham will usher in the rush week parties for the Zetas Wednesday afternoon. The colors of the sorority, blue and gray, will be carried out in floral and other decorations. With potted decorations, rushees will be entertained with a dinner at the Austin Club Wednesday night. Arrangements are in the hands of Aliene Burch, rush captain.

Professors Return  
Dr. J. L. Henderson, professor of secondary education, Professor T. H. Shelby, dean of the division of extension, Dr. H. T. Manuel, professor of educational psychology, and Dr. J. O. Marberry, professor of educational administration, returned Sunday from Laredo where they were on the program at a meeting of the South Texas Division of State Teachers Association. H. C. Baker, president of the South Texas Division, is a graduate student of the University.

Frances Benefield of Littlefield Dormitory has withdrawn from

school and returned to her home in Jefferson.

PHONE 5334  
9th & LAVACA



## For the Rush Week Parade

Young gentlemen, that touch of a master tailor will make your clothes perfectly neat, and meticulously clean. Be sure you attend to this today.



CLEANER, DYER & HATTER  
913 CONGRESS AVE.  
PHONE 2-1166

## Student Branch Manager Wanted

One of the largest wholesale firms specializing in clothes for the college man is seeking a campus representative. The man must have selling experience (not necessarily clothing), must be a live wire and have good connections.

We will establish a branch at this university and want a manager who is desirous of making real money. At the present time we are represented at some of the largest universities in the country.

Write, tell us about yourself, your past selling experience. Our sales manager will be in town shortly and interview applicants.

Miss Camp  
Room 513  
612 N. Michigan Ave.,  
Chicago, Illinois.



THEATERS

"SCANDAL SHEET" (\*)—with George Bancroft, Kay Francis, and Clive Brook, last times today. "Last of the Lone Wolf," with Bert Lytell and Patsy Ruth Miller, Wednesday through Friday, with the Texas Rockets (girls) on the stage. At the Paramount.

"CIMARRON" (\*)—with Richard Dix, Irene Dunne, Estelle Taylor, and William Collier, Jr., now through next Friday. At the Hancock.

"THE GREAT MEADOW"—with John Mack Brown and Eleanor Boardman, now through Wednesday. "The Lottery Bride," with Jeanette MacDonald, John Garfield, ZaSu Pitts, and Joe E. Brown, Thursday through Saturday. At the Queen.

"SOUP TO NUTS"—Rube Goldberg's movie with Ted Healy, Frances McCoy, Stanley Smith, and Charles Winninger, today only. "Sap from Syracuse," with Jack Oakie, Wednesday and Thursday. "The Big Trail," with John Wayne and Marguerite Churchill, Friday and Saturday. At the Texas.

\*Only shows much above the average are so distinguished.

Reviewed Today

"THE GREAT MEADOW," now showing at the Queen, starts out as a super-production aimed at the enviable goal of another historical panorama, presenting as its specific topic the settling of Kentucky by a hardy group of Virginians. After it is well on its way toward that goal, the picture manuevers an about-face and turns out to be a love story on the Enoch Arden theme. Both the historical struggles and the love story are somewhat haltingly told, but manage to be fair entertainment. John Mack Brown, usually an excellent type actor, and Eleanor Boardman, a prominent actress, share the privations, dread, ambitions, and bitter-sweet triumphs of the historic panorama of the year 1775, and conduct themselves agreeably, though not brilliantly, in the Enoch Arden narrative.

It seems that the stout-hearted pioneer played by Mr. Brown becomes restless immediately after getting in his first harvest in the new land and must be off to fight the Indians. His motive is the fact that the Indians have slain his mother; nevertheless, when he returns years later, his wife has married another man. This is the movie, and so true love has its way. Miss Boardman has a good figure.

Opening Today

"SOUP TO NUTS," which will be seen on the Texas Theater screen today only, is a product of Rube Goldberg the cartoonist and Fox Movietone Pictures. It is a comedy, with nut stuff built around a serious story in which an elderly costume shop keeper, a telephone girl, and assorted sweeties go through bankruptcy, some night club sequences, and a devastating fire to come out all right in the end—making it an ordinary movie depending on its humor to get it across. The humor is that it does, Mr. Goldberg the cartoonist deserving most of the bows. The cast includes Ted Healy, Frances McCoy, Stanley Smith, Charles Winninger, and a number of other clowns.

Music Fraternity Sponsors Program

American songs and German piano numbers were the features of the program of Tau Mu, honorary music fraternity, at the meeting Monday night, February 16. Bonnie Bess Ware, a student of the University, assisted the hostess, Miss Ruby Lee Haberlin, in the entertainment.

WORK PROGRESSES Steel work on the new Classroom Building was in progress Monday night, with about ten steel workers on the job. The steel men work on the construction until early morning when necessary.

TERRIFIC AS ALL CREATION EDNA FERBER'S GOLDEN AGE

LOVERS—Empire Builders A man with a gun in his hand... steel in his blood... a woman with love in her eyes... mud on her cheeks... gold in her heart

RICHARD DIX IRENE DUNNE A CAST OF THOUSANDS

Shorter Sleeves, Longer Gloves



© VOGUE

Sleeves are shrinking as to length, but by this very process they become doubly important. Time was when the only sleeves for town were full length, but now they have crept smartly up to three-quarters length, sometimes with a long sleeve underneath, and even to elbow length!

Witness the superlative chic suit in the illustration. Of dark brown wool crepe, it has short sleeves edged with bands of brown fur. The neck-line proves versatile for it may be worn buttoned over or unbuttoned to make a single reverse.

As sleeves grow shorter, gloves must grow longer! For three-quarters length sleeves, there are gloves of six- and eight-button length, and for

shorter sleeves, there are ten and twelve-button length gloves. Dark brown and black suede are est emphasizing beige, green and gray. Either black or white ones are the choice for black-and-white costumes. While the neutral tones of beige and egg-shell are still good, it is smarter to wear darker tones.

In considering the arm, hand-bags must come to the fore. While the envelope shape has not been discarded, bags with frames seem a little newer. The upper bag shown here is of pin seal with a chaste bar clasp. The other model of patent leather has a modern silver frame.

(Copyright, 1931, Vogue)

Athenaeum Debates Horse Racing Bill

"Resolved, That the legislature should pass the bill legalizing betting on horse racing in Texas," was the chief subject for debate at the Athenaeum Literary Society Monday night. Speeches were made on the affirmative by W. C. McCutcheon and Martin Casey, and on the negative by George Roberdeau and Ben L. Byrd. A speech was also made by Leroy Jeffers on the division of the University oil land with Texas A. & M.

Because of a holiday next Monday, there will be no meeting of Athenaeum.

P. T. A. GIVES PROGRAM

Plans are being made for the program to be given by the Austin Senior High School P. T. A. at the cabaret to be held in the school lunch room Friday, February 20, at 7:30 o'clock. The program will consist of a welcome and a founders' address by Mrs. Noyes D. Smith, some musical numbers, and skits. Edith Fox, assistant in the department of

journalism of the University, accompanied by Emma Virginia Decherd, will give a vocal imitation of a cornet.

CASIS RECOVERING

Miss Lilia Mary Casis, professor of Romance languages, who has been ill since the beginning of the semester, is improving, but is still confined to her bed, Dr. E. R. Sims, professor of Romance languages, stated yesterday.

DEANS ATTEND MEET

Miss Ruby Terrill, dean of women, and Miss Dorothy Gebauer, assistant dean of women, left Austin Sunday at noon for Detroit, where they will attend the National Conference of Deans of Women.

QUEEN

A romantic drama as big as all outdoors—thrilling adventures of the Virginia pioneers.

"The Great Meadow" with John Mack Brown Eleanor Boardman From the famous novel by Elizabeth Madox Roberts

Also "Leather Pushers" Prize Ring Comedy "Kandy Kabaret" Klever Kids News Events

TEXAS TODAY ONLY

SOUP TO NUTS Stanley Smith Ted Healy Frances McCoy

Rush Week Guests Find Campus Astir

With Rush Week almost in full swing, ex-students from all parts of the State of Texas are wending their way here to attend the various parties, dinners, and dances given by the sororities and fraternities for their prospective pledges.

Zeta Tau Alpha will have the following guests: Betty Greer, Alexine Crawford, and Maggie Hunter of Beaumont; Dorothy Downman and Margaret Moore, Houston; Mrs. Porter Rywaters, Elizabeth Lyle, and Betty Binnion, Dallas; Charlotte Bock, Mineral Wells; Marie Moses and Frances Carter of Georgetown; Catherine Carter of Temple; and Charlotte Reed of Houston.

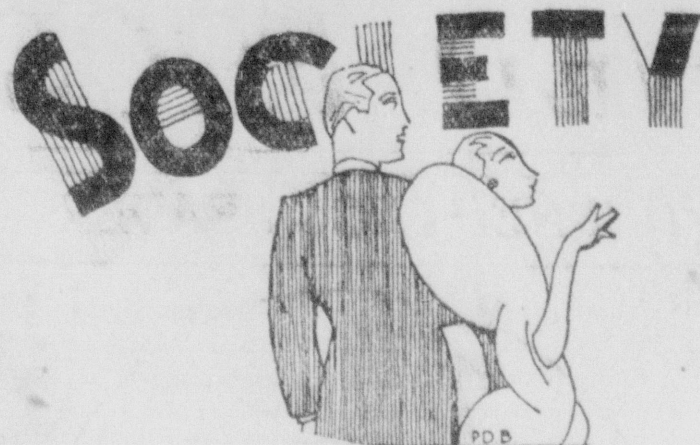
Sigma Phi Epsilon fraternity will have as their guests for Rush Week Bill Ellis of Port Aransas, Herbert Craft of Dallas, David Durham of Beaumont, and Bill Sherrod of Pecos.

Sigma Nu fraternity will have as their guests Frank Cheatham, Clarkson Groos, Cliff Tupper, and Scotty McKee of San Antonio; Arden Russell and Jake Looney of Houston; Gordy Brown of Dallas; Forrest White and Glenn Wallace of Port Worth.

Four visitors arrived Monday afternoon at the Alpha Chi Omega house. They were Mrs. Peyton Wemyss-Smith of Oklahoma City, council delegate; Mrs. Carl Winsor of Wichita, Kan., province president; Mrs. J. E. Tolbert of Amarillo; and Miss Katherine Gurdy of Blackwell, Okla.

Rush Week activities will bring seven alumnae members of Pi Beta Phi to Austin this week. Misses Evelyn Gay of Waco, Vivian Walker of Corsicana, Justa Fletcher of Beaumont, Maxine Fletcher of Temple, Susanne Carroll of Waco, Salome McAllen of Brownsville, and Mrs. Gordon Bredford of Eastland will be guests at the sorority house. Mrs. Bredford was formerly Miss Virginia McCloud.

Guests at the Alpha Phi house will be Nedra Newkirk, and



Katherine Rose of Dallas; Mable Cooper and Mrs. Wallace Francis, San Antonio; Mary Katherine Boone, Brownwood; and Sara Jane Wurzbach of Jefferson. Mary Katherine Boone of Brownwood is a visitor at the Alpha Phi house.

Seated Tea

A FORMAL SEATED TEA will be given at Scottish Rite Dormitory from 3:30 to 5:30 o'clock Wednesday, February 18 by the Newcomers Club, honoring the University Ladies Club. The program will begin at 4:15 o'clock and will consist of musical numbers, dramatic sketches, and solo dancing. Palms, ferns, and potted plants will compose the decorations, with cut flowers on the table.

ALPHA PHI'S Austin alumnae association combined a social and business meeting Sunday night at the home of Mrs. M. G. Woodbury on East Twenty-fourth Street. Mrs. Woodbury and Mrs. Catesby Taylor were hostesses. Those present were Misses Goldie Horton, Pauline Goldman, Marion Briggs, Elizabeth Nagle, Aline Lovell, Ruth Mator, Julia Boggess, Elaine Bledsoe, Evelyn Thompson, Mary Katherine Boon, and Mrs. Gene White.

Chaperone

PI PHI CHAPERONE for the present is Mrs. George D. Schrader of St. Louis. She is functioning in the absence of Mrs. N. A. Sayre, who is spending several months with her family in Cincinnati. Mrs. Sayre will not return to her duties before April.

HUSBANDS AS SPECIAL GUESTS featured a dinner given by Chapter R of P. E. O. Saturday evening at the home of Mr. and Mrs. Will Watt, with Mr. and Mrs. Frank P. Sexton as joint host and hostess. Decorations carried out the Valentine theme in the house and on the small tables around which the guests were seated. Bridge and other games

were enjoyed after the dinner. Guests for the affair were as follows: Messrs. and Mesdames, E. G. Bischoff, L. L. Click, Albert L. Davis, J. A. Fitzgerald, Earle B. Mayfield, Dave Reed, E. H. Sellards Earle Simms, Roy West, Dalton Richardson, J. O. Roots, Joseph McGill, William Allen; Mesdames Maude Watts, Alyce Reed, and Miss Rosalie Godfrey.

THURSDAY AFTERNOON TEA will be held as usual this week from 4 to 5 o'clock in the office of the Dean of Women, Miss Lula Bewley, assistant to the dean, announced.

Miss Anna Kostant of New York, who is now playing with the Palace Stock Company in Houston, was the guest of Dave Reed last week-end. Miss Kostant has featured in Veiller's "Trial of Mary Dugan" and Rice's "Street Scene."

Court Carlo Sforza was a dinner guest at the Sigma Alpha Epsilon house Sunday.

Edith Fox, assistant in journalism, is ill at her home.

Louise Weddington was the guest of Maude O'Connor in Victoria last week-end.

Dorothy Doane spent the week end at her home in Bryan.

Evelyn Pridgen, Pi Beta Phi, spent the week-end in San Antonio.

Oppie Watson, ex-student of the University spent the week-end at the D. E. K. house.

Mr. and Mrs. Lawrence Green motored to Austin to spend Sunday with their daughter, Elizabeth, at the Littlefield Dormitory.

Evelyn Gay, Pi Beta Phi and ex-student of the University, represented Waco at Mardi Gras in Galveston, and will arrive in Austin Wednesday for a short visit.

COMMISSION TO MEET

Sophomore commission of the Y. W. C. A. will meet under the direction of Bertha Humbert, chairman of the group, Wednesday afternoon at 5 o'clock to have its first meeting on the project which they have chosen for their second semester program. This project is the reading and studying of modern poetry. Chinese and Japanese poetry will be discussed Wednesday.

ALL WORK BY Experienced Operators Hair Cutting by Mr. Caruthers -AT- MARINELLO BEAUTY SHOP 404 Norwood Bldg.—Ph. 4014

Newman Club Hears Russian Native Talk

Dietrich Rempel, a native Russian, described the disorder of the new regime in Russia under the Soviet government at a meeting of the Newman Club at 11 o'clock Sunday morning. Mr. Rempel told of his experiences under the new government and of his escape to America. After his talk, he sang several Russian folk songs accompanying himself on the guitar.

Pauline Hecker, Menton Murray, Theodore Kunz, and Jimmy Quinlan have been elected to serve on the executive council, stated Arthur Hubbard, president.

The Cactus picture will not be made until March 1. The picture of the Thespian group will be taken the same day.

S. M. U. Professors Edit Poetry Volume

"Famous Editions of English Poets," a book containing reprints of original editions of the poems of Shakespeare, Milton, Dryden, Pope, and other great English poets, was released from the press February 1.

Dr. John O. Beatty of the English department of S. M. U. who lectured here this year and who is to teach here during the summer session, in co-operation with Dr. John W. Rowyer, also of the English department of S. M. U., compiled the material for this book.

CACTUS PICTURE TAKEN

Chairmen of the departments in the College of Arts and Sciences will meet in front of the Main Building at 5 o'clock Wednesday to have their picture taken for the Cactus, Chester Allen, editor of the personnel section of the book, announced Monday. Allen urged that every one of the chairmen be present.

Pi Beta Phi sorority announces the pledging of Mary Alice Watson of Brownwood. Miss Watson entered the University as a graduate student at the beginning of the second semester.

Quincy Lee spent the week-end in San Antonio.

Display of—

Continued from Page 1

that you will be held responsible by Pan-Hellenic and that they may bar you from pledging at all.

And in conclusion Miss Holmes pointed out that once you signed the preference slip, whether you pledged or not, no girl was eligible for rushing within the year. "Furthermore," she said, "in the case of conflicting classes and laboratory hours, rushees should communicate with the rush captains of the sororities with whom they have dates at any time, and arrangements will be made for members of the sorority call for them at a time that they are ready. All rushees are urged to be ready at their residences at the appointed time otherwise."

Stationery with the individual crest of your fraternity or sorority



It is a mark of distinction to own such individual stationery as this. When you write to "the folks back home," note the feeling of pride you have. Invest in a box of this fine stationery today. Handsomely embossed with the crest of your fraternity, or sorority.

CO-OP

The Students Own Store

NOW'S THE TIME TO BEGIN PRACTICE

Brush Up on That Old Golf Swing, or Tennis Drive

In the course of practice, you'll find you need any number of supplies. You'll find what you need at the Co-Op, at very low prices.

- Golf Clubs, steel shafts.....\$5.00 up
- Golf Clubs, hickory shafts \$1.50 up
- Caddy Bags.....\$1.25 up
- Golf Balls, doz.....\$4.50 up
- Reddy Tees.....25c box
- Tennis Racquets.....\$1.50 up
- Tennis Racquet Covers.....50c
- Tennis Balls.....50c, 3 for \$1.25
- Tennis Shoes.....\$1.50 up
- Wool Sox.....50c
- Sweat Shirts.....\$1.50

CO-OP

The Students Own Store

Classified Ad Section

CLASSIFIED RATES

Maximum 20 Words

Times	Price	Each Extra Word
1	\$ .30	1c
2	.55	2c
3	.70	3c
6	1.00	4c
1 mo.	3.50	14c

BUSINESS DIRECTORY

1 month \$1.00 per line minimum three lines

Other Rates on Request

LOST & FOUND

LOST—A Delta Zeta sorority pin; if found call Ann Cook at 9056.

APARTMENTS

IF INTERESTED in small apartment, in private home, reasonable price, near University, phone 2-2495.

FOR RENT—Furnished housekeeping apartment, private bath. Small apt. modern. Reasonable rent. 765 West 24 1-2 St. Ring 1045.

ROOMS FOR RENT

VACANCY for boys in a modern home 4 blocks west of University. All conveniences, hot water at all times, south sleeping porch, single beds, gas heat. Phone 4517.

WANTED

WANTED—Two first-class steel guitar players for Thursday afternoon. Call Williams at 8858, after 6 p. m.

JOB WANTED—University boy wants general work for approximately one hour each day. References furnished. Address Box 1927-M, University Station.

THE DAILY TEXAN Business Directory

AUTO TOPS

JACOB'S TOP SHOP Auto Tops—Curtains—Seat Covers 107 W. 5th Phone 4182

BEAUTY PARLOR

HOLLYWOOD BEAUTY SHOP—All lines of beauty culture. Permanent \$5.00 to \$12.00. Finger waves 25c. Phone 2-1609, 116 E. 8th St.

CLOTHING WANTED

HIGHEST cash prices paid for second-hand clothing, shoes, hats, trunks and suit cases. A. Schwartz, 417 E. 5th, Phone 3762.

CLEANING & PRESSING

NOTICE: Students' dresses plain cleaned and pressed. 75c; hats, 50c; suits, 50c; cash on delivery prices. Warren's, Phone 6472.

Get Your message before 5500 students, through the BUSINESS DIRECTORY.

DENTISTS

DRS. LYNN and LYNN Dental Surgeons 1012 Norwood Bldg. PHONE 8154

LAUNDRY

HOME LAUNDRY PHONE 3702

PLUMBING

E. RAVEN, Plumbing, repairs. Gas fittings. Gas heaters. Nice selection. Prices reasonable. Merion water heaters. 1493 Lavaca Street. Phone 6763.

RECORDS

"LONESOME LOVER," and "Reaching For The Moon," with Ted Wallace and his Campus Boys. Hear them at J. R. Reed Music Co. 805 Congress.

TEA ROOMS

COLLEGE INN—Turkey dinners, 6-9 Sunday 75c. Picnic lunches a special. Mrs. Sam Marlan, 2500 Nueces, 7522.



# STEERS AND HORNNED FROGS MEET TONIGHT

## Dietzel, Sumner Head List of Toad Stars

The Texas Christian University Horned Frogs, battling for the Southwest Conference championship, invade Gregory Gymnasium tonight for a game with Fred Walker's luckless Longhorns, undisputed occupants of the league basement. The game will start at 7:30 o'clock. In second place, approximately one and one-half games behind the undefeated Ponies of Southern Methodist, the Schmidtmens still have a definite chance to win the pennant provided they win the remainder of their games, and also provided somebody can down the Mustangs in a trio of contests. On the other hand the Steers, dropping their sixth straight to the Rice Owls Saturday night, are hopelessly out of the running. The Frogs are overwhelming favorites to take tonight's clash.

### Here Comes Dietzel

Two sophomores, Adolph Dietzel and Doc Sumner, center and forward, are the dynamite in the Toad attack. Dietzel held the conference scoring lead until recently, when Williams and Reynolds, of S. M. U. sent him into third position. He has collected a total of 90 points. Sumner is close behind, being station in fifth position with 81 tallies. Dietzel, a sensation in early games, has been somewhat checked of late, but Sumner has come through to take the lead in winning ball games for the Purple. The Athens High product, an all-American high school performer, has been rated the most polished cager in the Southwest.

Against the Horned Frog satellites Coach Walker will pit his leading performers, Captain Jim Fomby and Bull Elkins. Fomby had hard luck in the Rice game, going out on personals in the first twelve minutes. In the first T. C. U.-Texas contest Jim played a fine game, getting his share of the tip-offs from the six-foot Dietzel. Playing on his home court, Fomby will give the elongated Toad plenty of competition.

Bull Elkins, after a shaky start, has settled into the most consistent man on the Steer squad, in addition to leading the team in scoring for conference games. Although he cannot match Sumner's record, the little Texas forward will see to it that all the brilliant goal-looping does not come from the visiting quintet. Ed Price, sophomore who has been playing fine ball of late, is sure to get the other forward post for Texas, while Coach Schmidt of T. C. U. has two veterans, Ray McCulloch and Clyde Roberson, from whom to choose a running mate for Sumner.

Captain Noble Atkins and Harlos Green are the regular Christian guards. Buster Brannon, soph flash, alternates with Green. Earl Taylor, who played his best game of the season at Houston, is likely to start at one guard for the Steers, with Pap Perkins, Wyatt Taylor, or John Tullis at the other. Bill Kubricht, reserve center, is sure to get in the game at some position. He played brilliantly against the Owls after replacing Fomby in the first half.

### CHRISTIANS HOPE TO STAY IN RACE BY WIN TONIGHT

Special to The Daily Texan.  
FORT WORTH, Feb. 16.—Texas Christian's victory over the

## Boxing Entries Close Wednesday

The closing date for boxing and wrestling entries has been changed from Friday, February 20, to Wednesday, February 18, due to the fact that the following Monday is a holiday and all names must be checked before the tournament starts, B. M. Whitaker announced.

All men who are not checked by Marty Karow in boxing or Roy McLean in wrestling will be given a chance to be enrolled Friday, February 20, at 5 o'clock in the wrestling and boxing rooms in Gregory Gymnasium.

Texas Aggies here Friday night enabled the Frogs to stay in the conference running and still have a good shot at the Southwest title, providing they win the rest of their games, and S. M. U. is taken for a cleaning by some other conference foe. The Frogs showed marked improvement on their execution of plays and sinking free shots which caused them to drop two games earlier in the season.

The next three games will be played away from home. Coach Schmidt takes his cagers to Austin for a return game with the University of Texas Longhorns Tuesday night. The following Tuesday night the Frogs journey to Aggie land for a game with the Farmers, and on the next night they will go to Houston for a game with the Rice Owls.

On Feb. 28 Coach Wolf will bring his Baylor Bears to Fort Worth for a game with the Frogs on their home court. Then on March 3 the Frogs wind up the conference race with a game here against the Southern Methodist Mustangs.

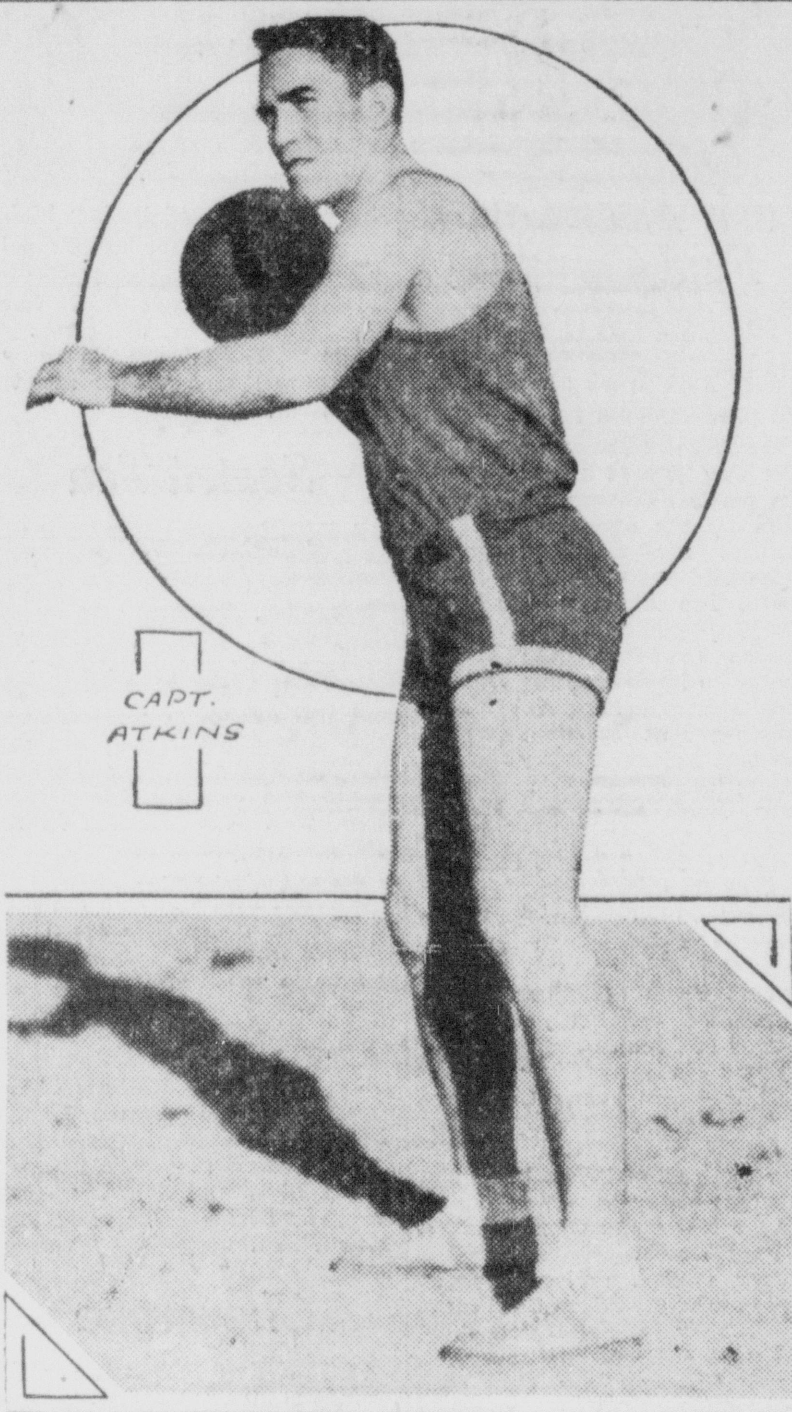
Coach Schmidt has two new members added to the varsity roster, bringing the total candidates to 11. Vance Woolwine and Otis Stell are the new members. They joined the squad this week end, were suited out last night for the first time.

Woolwine, a sophomore, member of last year's championship intramural team, has been playing basketball since his days at North Side high school. Stell became eligible for varsity competition this spring but did not join the squad until this week. He is a former Central High star, and was a member of Schepps Aces team last year that won the Southern A. A. U. championship. He was also a member of "Dutch" Meyer's freshman squad last year, making his numeral. Both are forwards.

### FENCERS MEET THURSDAY

Members of Eta Phi Epsilon, honorary fencing fraternity, will meet at Major S. N. Eckdahl's office in the Gregory Gym Thursday, February 19.

## HORNED FROG LEADER



CAPT. ATKINS

## Williams, Reynolds, Tie For Scoring Leadership

Rhea Williams, forward, and Jake Reynolds, center, twin scoring aces of the conference-leading Mustangs ended the past week in a deadlock for high scoring honors with 95 points.

Reynolds advanced from third position to a tie for first when he scored 21 points against the Aggies while his team mate Williams was held to 6 counters. Dietzel, tall Christian center, is in third position with 90.

Bull Elkins finished another week as leader of the Texas team in conference scoring with 63 points, and high among the conference leaders, Earl Taylor scored 15 points against the Rice Owls Saturday night and took second place among the Texas scorers. Captain Jim Fomby failed to tally in the Rice game and his total remained at 49.

The following is a list of Conference players who have scored 40 or more points in Conference games:

Player	CG	FG	FT	CP	TP
Williams, S. M. U.	38	19	95		
Reynolds, S. M. U.	40	15	95		
Dietzel, T. C. U.	34	22	90		
Summer, T. C. U.	27	27	81		
Strickland, Baylor	27	23	77		
Sellers, Rice	25	23	73		
Dixon, Rice	30	13	73		
Holt, Arkansas	28	8	64		
Elkins, Texas	26	11	63		
Alford, Baylor	19	25	63		
Hart, Rice	25	12	62		
Pickren, Arkansas	20	17	57		
Murphy, Arkansas	18	21	57		
Sexton, Arkansas	22	12	56		
Taylor, Texas	18	17	53		
Fomby, Texas	20	9	49		
Hoke, A. & M.	21	7	49		
Bell, A. & M.	14	17	45		

## Intramurals

TUESDAY, FEBRUARY 17  
Handball Team  
Fraternity Division  
4:30 o'clock  
Delta Theta Phi vs. Phi Delta

Theta.  
Sigma Alpha Epsilon vs. Chi Phi.  
Beta Theta Pi vs. Tau Delta Phi.

### MRS. GOLDBECK ILL

Mrs. Frances Goldbeck, assistant to the Dean of Women, who has been ill for the past week, was reported improved Monday by Miss Lula Bewley, of the Dean of Women's office. Mrs. Goldbeck is still confined to her home at the Faculty Women's Club. It is not known when she will be able to resume her work, Miss Bewley said.

Health Service shows that seven students are ill. Thelma Plumb, Joe Sheppard, Elizabeth Terrell, and Myra Belle Beakley are at St. David's Hospital; and J. E. Boyd and Charles Pratt are at Seton Infirmary. Mrs. Bess Chewning is ill at her home.

### INFLUENZA SPREADING

Check Colds at once with 666. Take it as a preventive. Use 666 Salve for Babies.

### SEVEN STUDENTS ILL

A report from the University

## Open Season

for rushing. It's just around the corner. Fore-sighted rush captains will acquire new ash trays, etc.

## University Drug Store

Quick Delivery  
Phone 3514

## E. M. Scarbrough & Sons

New Spring Models - - -

\$6

is

Scarbrough's

price

for a

GOOD

Shoe

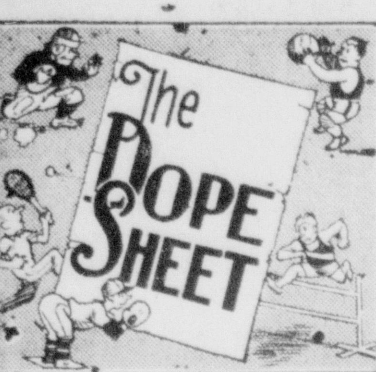
Shoe sales may come. And shoe sales may go. But \$6 is still our price on these men's shoes . . . (though it buys a much better shoe than it did a year ago!)

Black Calfskin . . . Brown Calfskin . . . Wing Tips . . . Straight Tips . . . Pointed Toes . . . Custom Lasts . . .

Sizes 6 to 11

==NEW LOCATION

—of our Men's Shoe Dept., is at the rear of the Man's Shop, corner 6th Street and Congress, Scarbrough building.



By WELDON HART

Texas Sports Editor

### CONFERENCE STANDING

	P	W	L	Pct.
S. M. U.	6	6	0	1.000
T. C. U.	7	5	2	.714
Arkansas	10	6	4	.600
Baylor	9	4	5	.444
A. & M.	8	3	5	.375
Rice	8	3	5	.375
TEXAS	8	1	7	.125

### FROSH BASEBALL

All freshman baseball candidates will meet in Gregory Gym 110 Thursday night at 7:30 o'clock. Coach Marty Karow has stated. Date of initial practice and other plans will be announced.

End runs and rolling blocks would not be amiss at the Frog-Steer game tonight, judging by the line-ups of the two teams.

Every man on the Horned Frog starting line-up and all but one or two on the entire squad play football. Robertson, Dietzel, and McCulloch are ends; Atkins a center; Summer, Green, and Brannon are backs. In addition Foster Howell and Johnny Vaughn, linemen, are on the roster.

Captain Noble Atkins also led the T. C. U. grid team last fall, while the other regular guard, Harlos Green, is captain-elect of the 1931 Purple eleven.

The Steers, boasting only two regulars with gridiron inclinations in Bull Elkins and Pap Perkins, will have it understood that this is a basketball game, with drop kicks and flying tackles strictly barred.

The Horned Frog crew which comes here tonight offers an excellent example of the ups and downs which come to basketball teams from season to season. Last year Coach Francis Schmidt came to T. C. U. from Arkansas, where he had won four straight conference championships and earned the title of wonder coach of the Southwest. He faced a dearth of material last season, and despite the fact that he was considered the best coach in the conference, the Frogs finished last.

However, he had the desired effect on the cage game at T. C. U. His reputation drew some of the best players in the state to the Fort Worth institution. Summer, Brannon, Dietzel, to name the outstanding ones, would have been welcomed at any college in the state. With this material ready for competition this year, Schmidt has molded a team which is very much in the pennant race.

Lean years are experienced in other conferences besides our own, as evinced by the case of McDermott at Oklahoma University. With a sensational crew of basketballers the Sooner team went through two or three seasons unchecked. The stars graduated last year. The Sooners are now on the bottom.

Speaking of freshman prospects, the Steers are about as well fixed up along that line as any team in the circuit. Several members of the present frosh crew, including Fagan, Chote, Williams, Rundell, Wittman, and Maxey are real prospects. Several of these lads could help the Steers this season, if they were eligible. The Longhorns struck their lean streak this season, but the famine is due to end next year. With the added soph material and the returning veterans, the Orange will be back in their rightful position, which is near the top of the percentage ladder.

## Cox Sells Story To San Antonio Express

Neva Cox, student in the University, has received word that her feature story on Mormons in Texas in 1860 was accepted by the San Antonio Express. This feature will appear soon.

The article is based on the original manuscript presented to the archives of the University ten years ago by the historian of the Church of the Latter Day Saint of Jesus Christ in Lamoni, Iowa.

The migration of the Mormons to Texas and their settlements in Austin, Boerne, Fredericksburg, Marble Falls, and San Antonio under the leadership of Lyman White of New York is the theme of the writing. Many of the descendants of these emigrants are living at the present time in San Antonio where plans for a Mormon temple are being organized.

Jack Orlick, who withdrew during the first semester, has registered for this semester.

Coming!

Thursday, Friday  
and Saturday of this week

Mr. John D. Fischer

—with Schloss Bros. & Co., will be here to show you the new things in Spring Suits—

Mr. Fischer is an artist at taking measurements and fitting clothes. If your suit doesn't fit you just as you think it should, he can tell you why - -

If you are considering a spring suit—or even a linen for summer, we will be glad to have you come in and see what Mr. Fischer has to offer - -

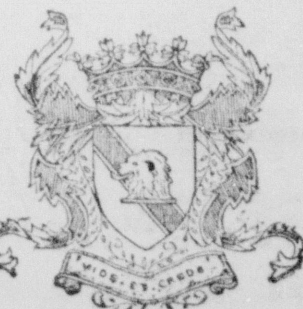
If you are not thinking of buying at all, we will still consider it a favor if you will come in and look - -

## THE UNIVERSITY TOGGERY

2310 Guadalupe

Phone 3090

J. L. ROSE



THE FINCHLEY HAT  
WILL BE FOUND HERE EXCLUSIVELY  
UNIVERSITY TOGGERY

J. L. Rose

2310 Guadalupe

Phone 3090