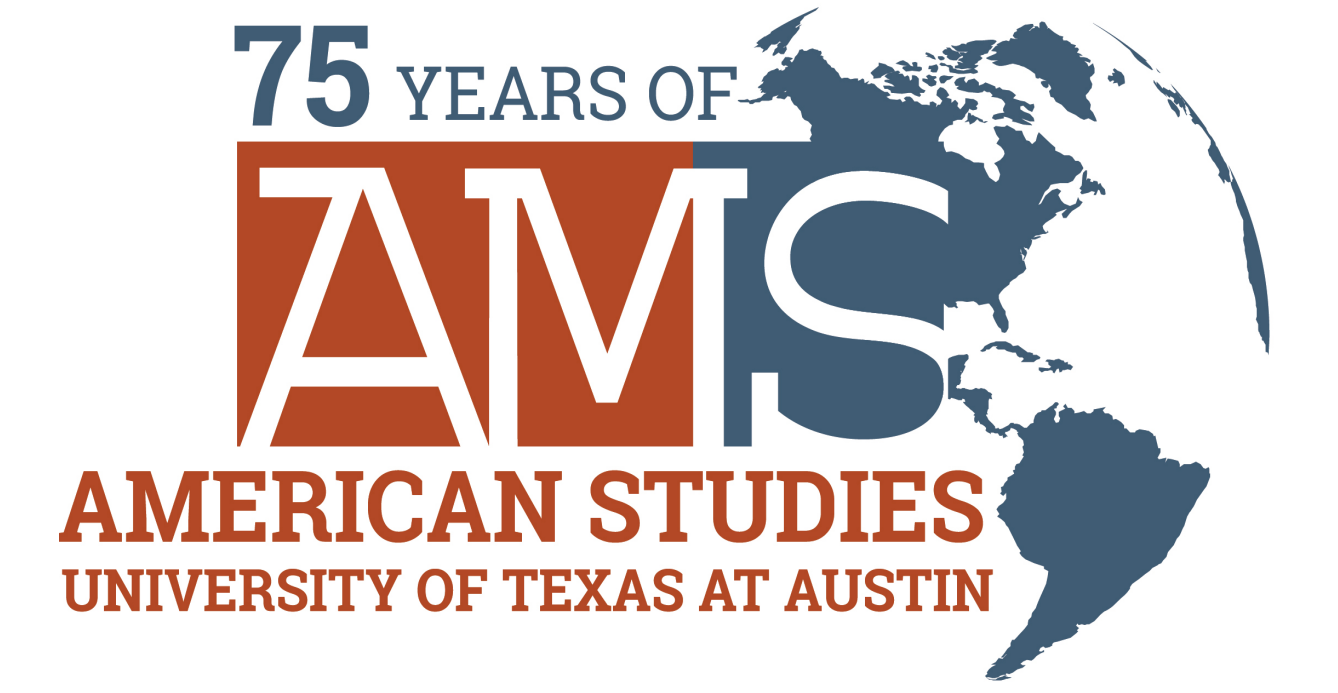


# Factory Farm to Table

Kerri Cavanaugh • Department of American Studies • [Kerridcavanaugh@gmail.com](mailto:Kerridcavanaugh@gmail.com)

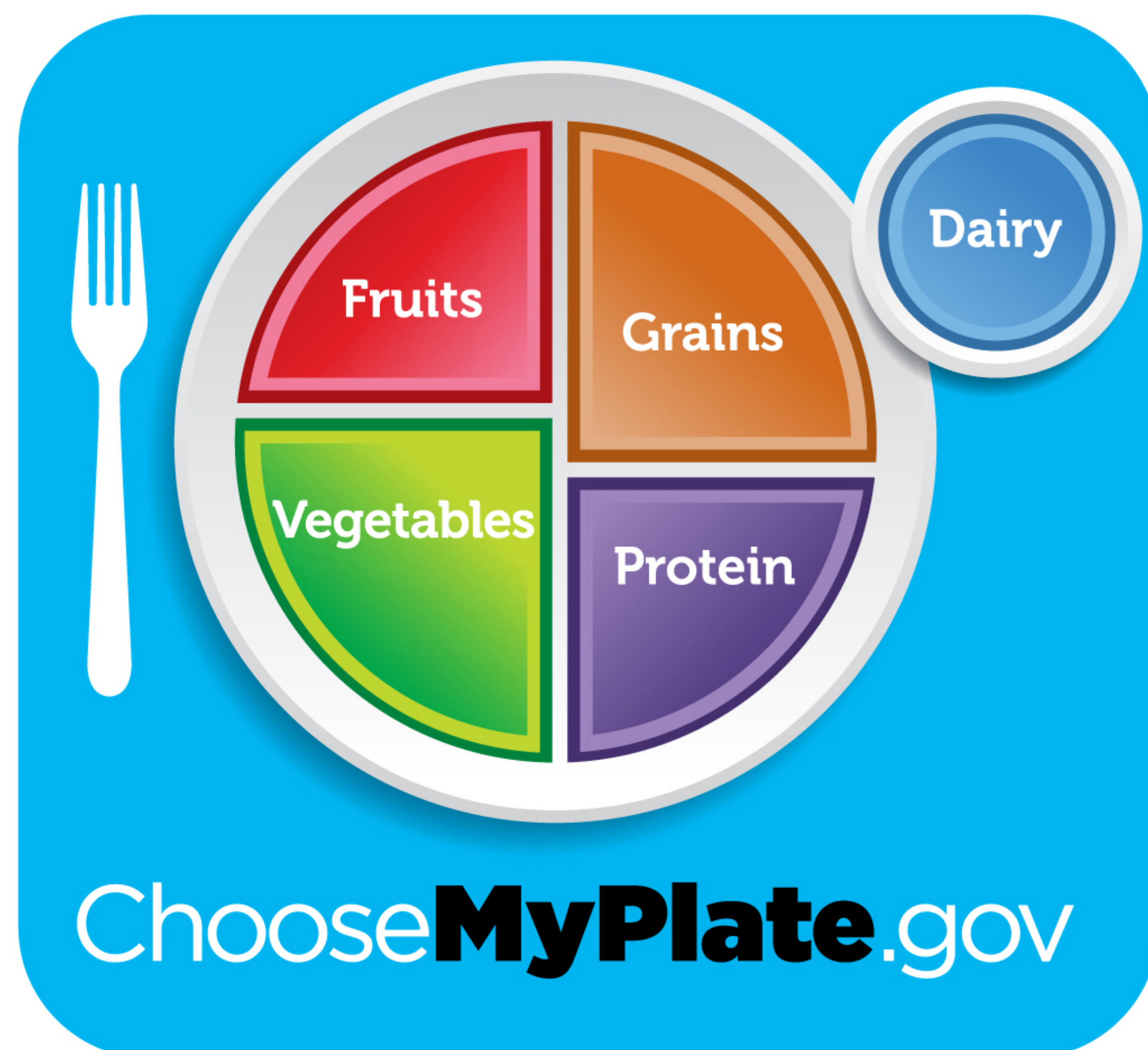


## Research Question

How are marginalized groups in American society further marginalized by the practices of factory farming?

## Defining the Issues

- MyPlate, a nutritional guide produced by the United States Department of Agriculture, is meant to help Americans achieve a healthy diet.
- The U.S. government subsidizes corn, leading to the abundance of junk food, often at a lower price than the price for fruits and vegetables.
- Factory farming, the practice of creating food in factory settings to increase efficiency, has led to a system of high calorie foods at a low cost.



MyPlate Graphic.  
Date: 4/2/2018 Source: United States Department of Agriculture

## Methods and Materials

This thesis utilized the following methods to obtain relevant information:

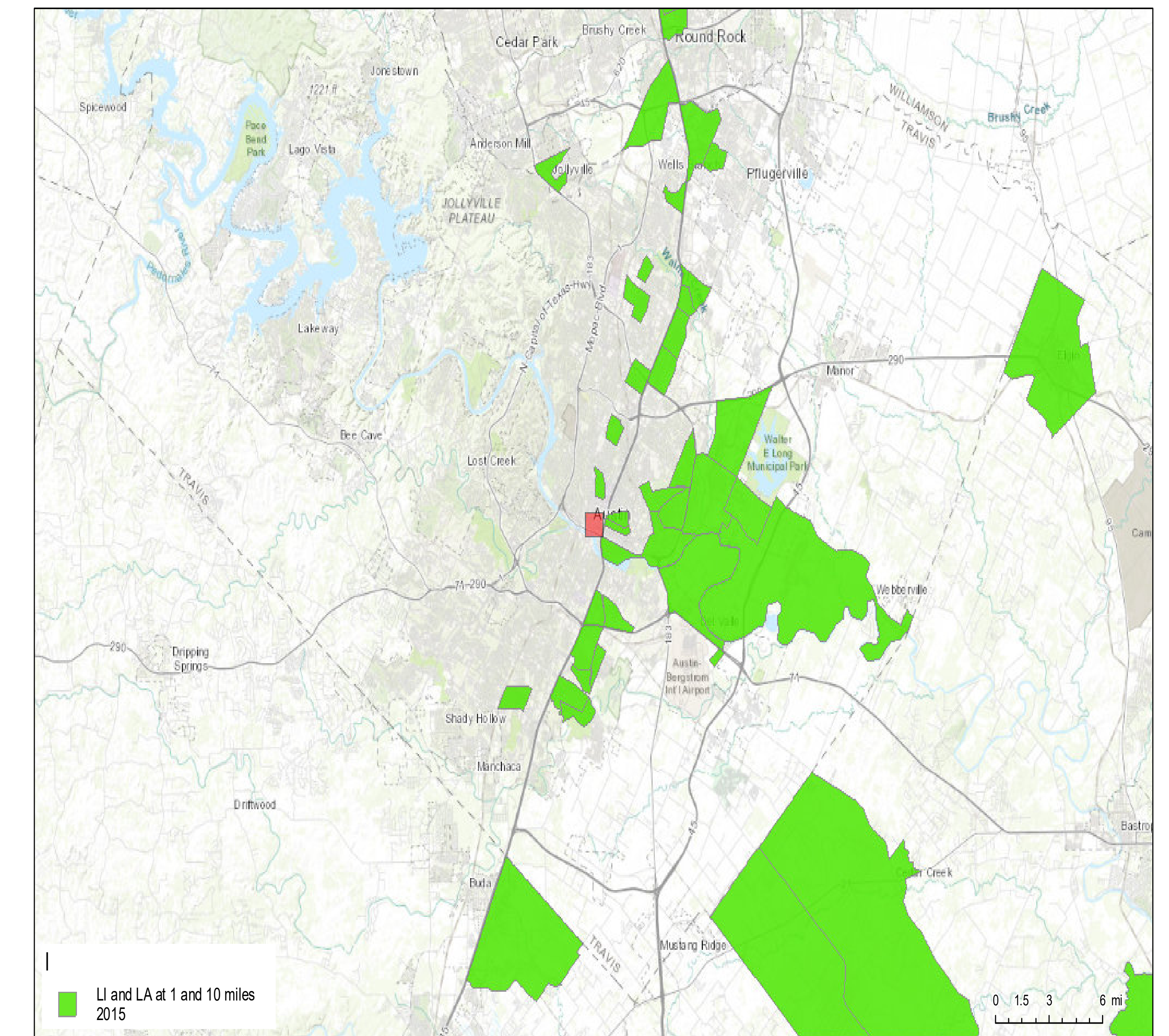
- Government documents
- Focus groups of Austin citizens
- Surveys of Austin citizens
- Congressional records, documentaries, personal accounts, articles and newspapers

## Results

- Factory farming creates a disconnect between what the government tells us to do and what they financially support.
- The process of factory farming fundamentally changes the self-identity of those involved in the production of the food.
- The government plays a large role in the rising rates of obesity and how we view the obese.
- Focus groups and surveys will help determine the attitudes of Austin citizens on food and obesity.

## Discussion

- The ethical treatment of animals has been a growing concern in society. How will these new attitudes affect our food production systems?
- Would the reduction of corn production create a healthier, skinnier America?
- Who to blame for weight of obese individuals?
- Do we have room in our landscape for a different system of food production?



Food Deserts in Austin, Texas

Date: 4/2/2018 Source: USDA Economic Research Service, ESRI. For more information: <https://www.ers.usda.gov/data-products/food-access-research-atlas/documentation>

## Acknowledgments

Thank you to the following:

- ✧ Dr. Mark Smith, Supervisor
- ✧ Dr. Janet Davis, 2<sup>nd</sup> Reader
- ✧ Dr. Cary Cordova, Honors Advisor
- ✧ College of Liberal Arts, American Studies Dept.
- ✧ Marion Burke Smith Thesis Scholarship
- ✧ Undergraduate Research Fellowship

## References

MyPlate graphic: Courtesy of the United States Department of Agriculture.  
Food Desert map: Courtesy of the United States Department of Agriculture, Economic Research Division.