

THE UNIVERSITY OF TEXAS AT AUSTIN

THE GENERAL LIBRARIES

DATA SHEET: PERRY-CASTANEDA LIBRARY

Projected completion date: March, 1977
Projected occupancy date: July, 1977
Projected opening date: August 29, 1977

Area, as calculated from contract documents:

Gross area, square feet	500,673
Support area (includes air shafts, elevators, elevator lobbies, elevator penthouse, mechanical pump room, postal self service unit, primary switch gear, service entry, stairs, telephone and electrical closets, toilets and transformer rooms)	85,505
Net assignable area, library functions	413,168
Efficiency = 82.6 percent	

Volume capacity - 3,250,000 volumes
Reader seating - 3,186 seats

Project costs:

General construction, including landscaping	\$17,427,371
Furniture and furnishings	\$ 2,700,000
Book stacks	\$ 765,376.39
Carpet	357,050.00
Equipment	452,364.61
Furniture	1,125,209.00
Future air balancing	51,000
Interface with other projects (utility tunnels)	126,255
Miscellaneous (building model, computer scheduling, printing)	42,700
Architects' fees	945,728
Administrative fees, UT System Office of Facilities Planning and Construction	<u>406,946</u>
	Total
	\$21,700,000
Move budget	137,800

Associated Architects:

Phelps, Simmons and Associates

and

Bartlett Cocke and Associates, Inc.
San Antonio, Texas

General Contractor:

Stokes Construction Company
San Marcos, Texas

Manufacturers:

Book stacks:

Estey Corporation

Carpet:

Bigelow and Unibound

Library chairs:

Sevajian

Library technical furniture:

Progressive Industries

Lounge furniture:

Monarch

Office furniture:

Steelcase, Allsteel

Office panel systems:

Haworth

Suppliers:

Book stacks:

Estey Corporation

Carpet:

Rockford Furniture & Carpets, Austin
Carpet Services, Dallas

Equipment:

Various

Furniture:

Rockford Furniture & Carpets, Austin
Central Distributing Company, San Antonio
Mark C. Norton Company, El Paso
Abel Contract Furniture & Equipment
Company, Austin

PERRY-CASTANEDA LIBRARY

MAIN AREAS AND SERVICES BY FLOOR

Level 1

Bibliographic Control Division:	
Buckram binding	1.204 J and K
Pamphlet binding	1.404
Serials Department	1.114
Mailroom, receiving and supplies	1.204
Meeting room	1.124
Periodicals and Microforms Unit	1.300
Photoduplication	1.402
Public lounge and vending machines	1.128
Special Services Department	1.102
Computer-based Information Services(CIS)	1.102
Human Relations Area Files (HRAF)	1.306
Maps	1.306
Staff lounge	1.138A

Level 2

Bibliographic Control Division:	2.300
Acquisitions and Processing Department	2.300
Automated Cataloging Department	2.300
Cataloging Department	2.300
Browsing Collection	2.100
Circulation Services Department	2.122
Circulation Desk	2.122
Inter-Library Service (ILS)	2.402 and A, F
Documents Unit	2.400
Entrance lobby	
Exit control	2.100
Public lockers and telephones	2.1
Exhibit cases	2.100
Public catalog	2.100
Reference Services Department	2.200
Information desk	2.230
Reserve Reading Room and Stacks	2.500 and 2.302

Level 3

Administrative Offices

3.200 - 3.246

Bookstacks

LC

A-DR

Dewey

000-009

040-059

080-089

100-299

900-919

930-949

Theses and Dissertations (circulating copies)

Level 4

Bookstacks

LC

DS-H

Dewey

030-039

060-069

300-319

330-339

360-369

380-399

650-659

920-929

950-999

Level 5

Bookstacks

LC

J-PN

Dewey

070-079

320-329

340-359

370-379

400-499

620-639

700-769

780-809

870-899

Documents Serial Set

Textbook Collection

Level 6

Bookstacks

LC

PQ-Z

Dewey

010-029

090-099

500-619

640-649

660-699

770-779

810-869

Two or More Floors

Bibliographers Offices

Committee Rooms

Faculty studies

Group studies

Lockable shelves for graduate students

Outside book returns

Photocopy machines

Restrooms

Seminar rooms

Smoking rooms

Typing rooms

Levels 4-6

Levels 3-6 (2 each)

Levels 3-6

Level 1 (2 studies)

Levels 3-6 (3 studies each)

(2 reserved for blind students)

Levels 3-6

Levels 1-2

Levels 1-6

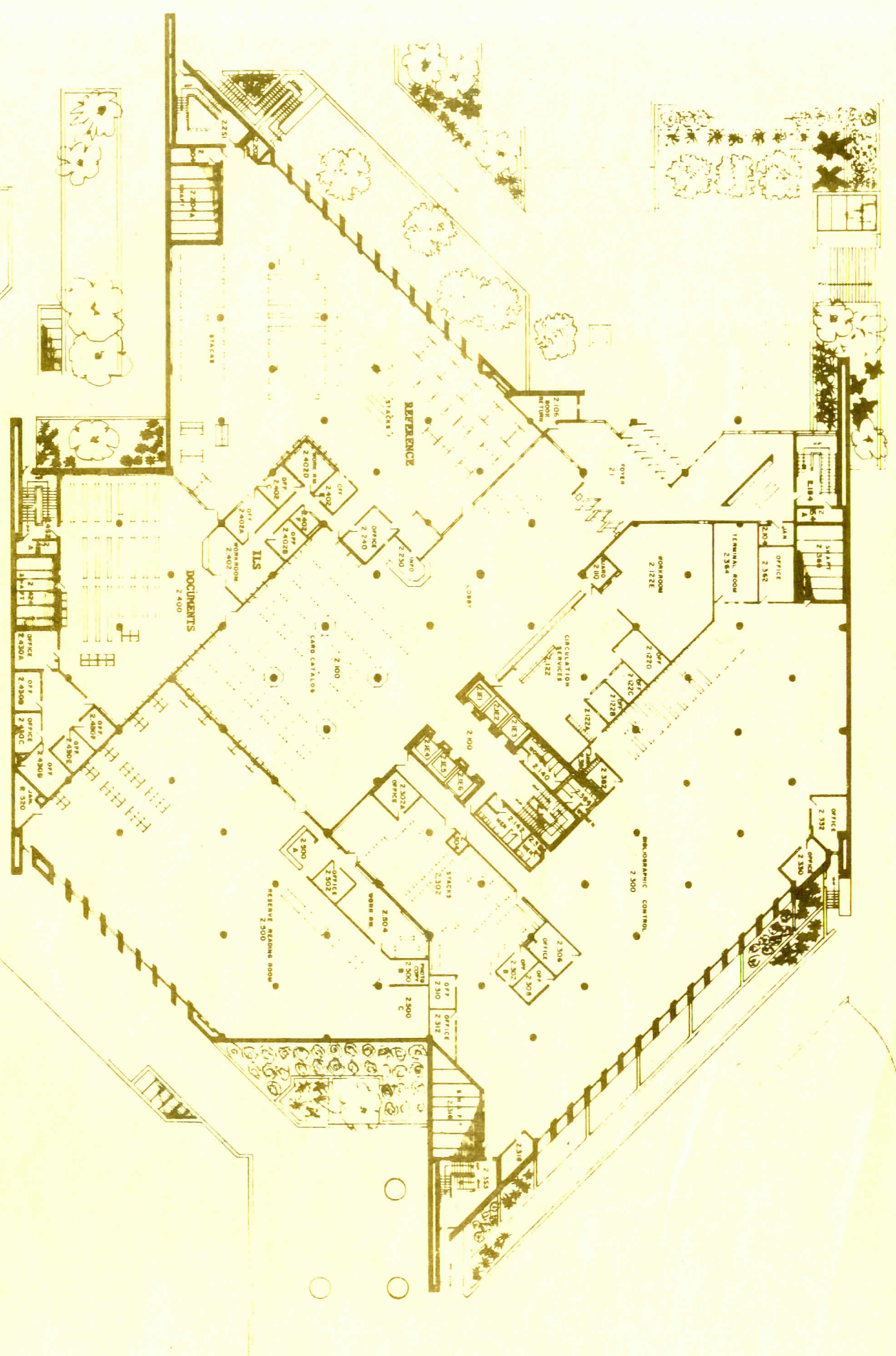
Levels 1-6

Levels 3-6 (1 each)

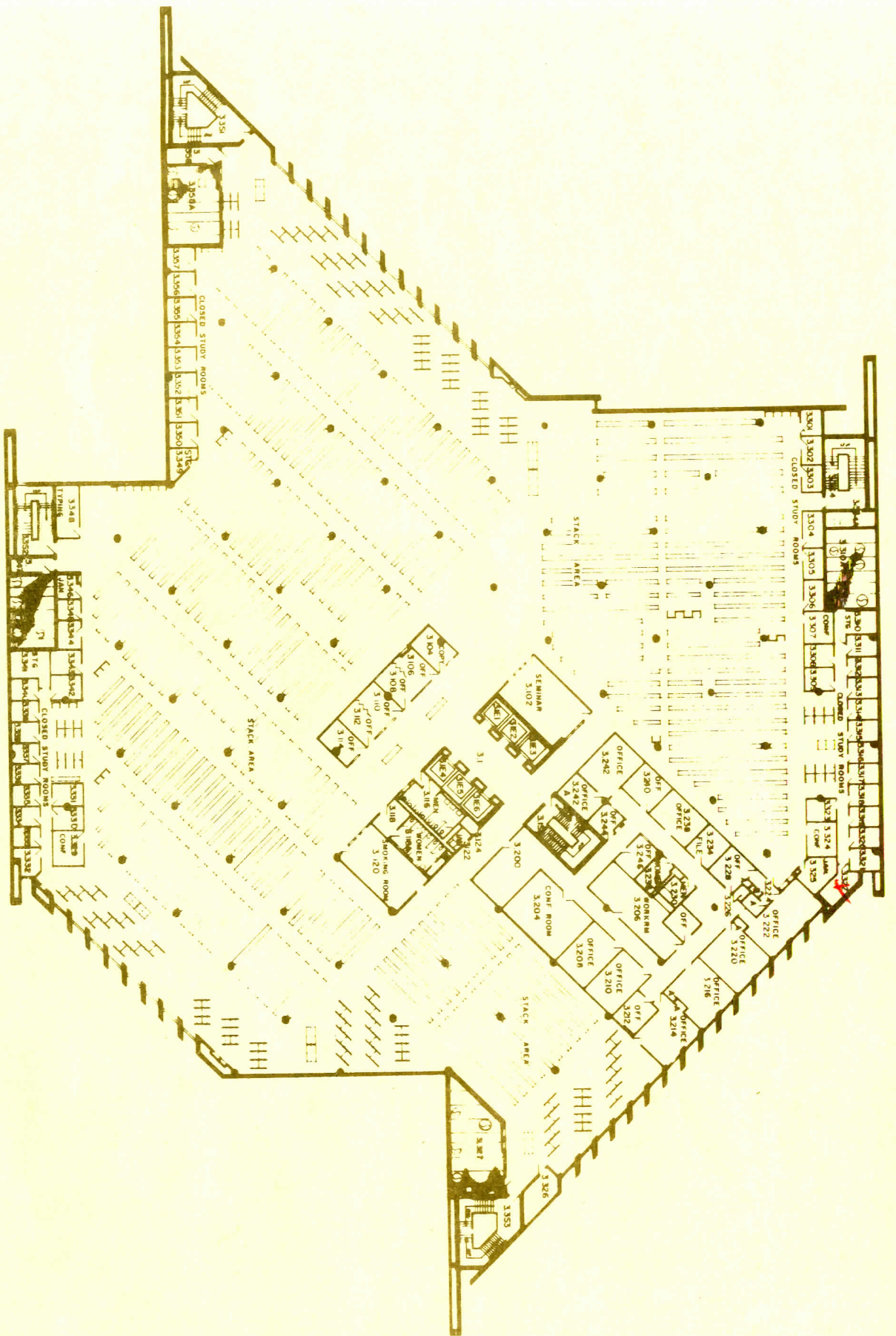
Levels 3-6 (1 each)

Levels 1, 3-6 (1 each)

SECOND LEVEL FLOOR PLAN

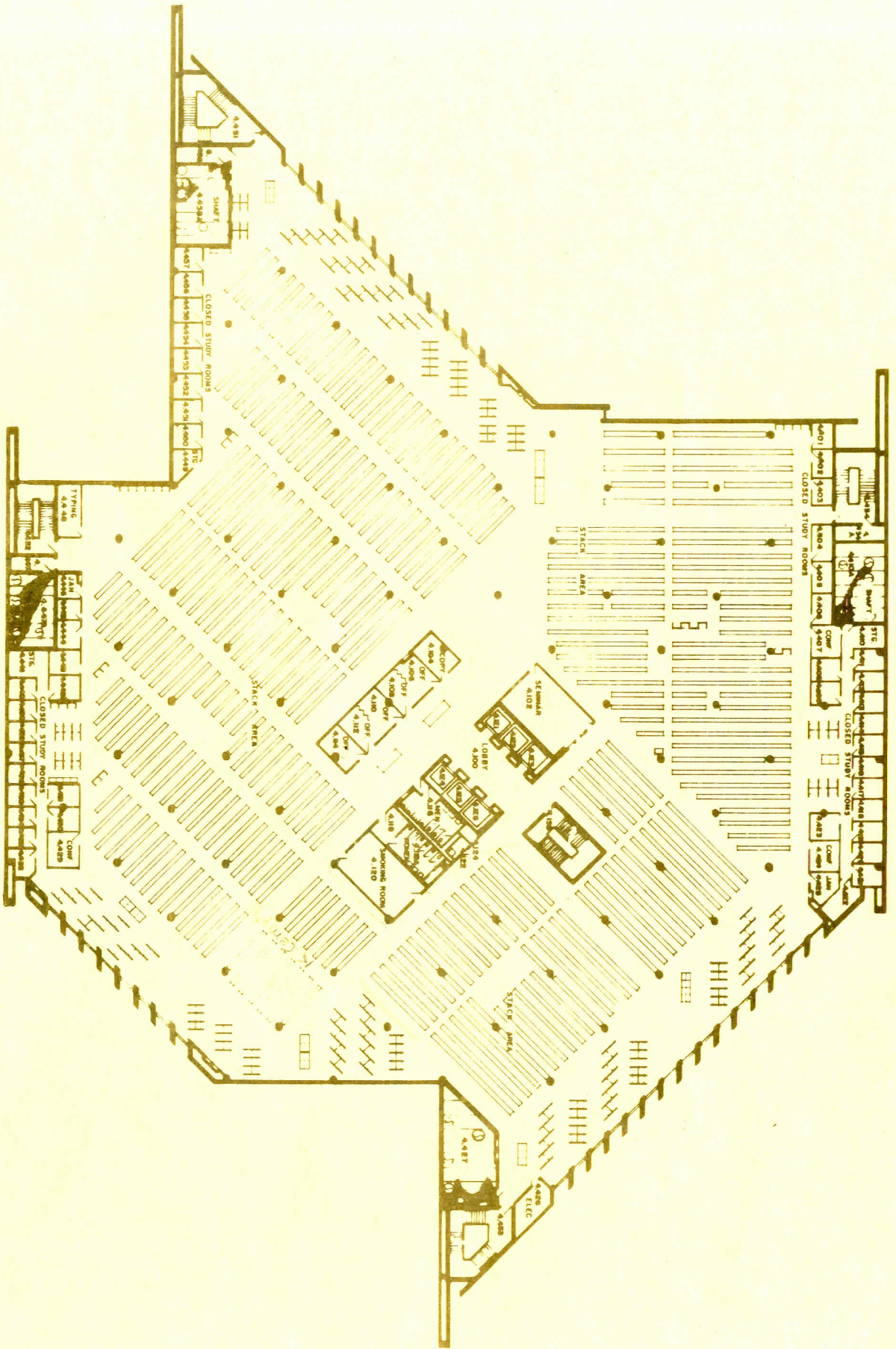


RECORD	DRAWING	DATE: 1/25/82
PERRY-CASTANEDA LIBRARY		BY: G.E.B.
THE UNIVERSITY OF TEXAS AT AUSTIN		REVISED
		of 6
		SHEET
		2



THIRD LEVEL FLOOR PLAN

RECORD	DRAWING	DATE: 1/73	SHEET
PERRY-CASTANEDA LIBRARY		BY: G.E.B.	of 6
THE UNIVERSITY OF TEXAS AT AUSTIN		REVISED:	
		33	



FOURTH LEVEL FLOOR PLAN ↗

Note: Floor plans for levels 4-6 are identical.

RECORD	DRAWING	DATE: 1/75	SHEET
PERRY-CASTANEDA LIBRARY		BY: G.E.B.	of 6
THE UNIVERSITY OF TEXAS AT AUSTIN		REVISED:	4